

Article - Blog Módulo CRM Web Site

Customization Guide - SAP C/4hana

Version

This article was created by SAP Marketing Cloud (1902) Version

Brief Description

For a long time, during the cutover tasks, some activities had to be done manually. However, after 1808 version. SAP implemented the functionality “Transport Management”. Which allow some objects to be transported from tenant A to Tenant B.

That’s what I will talk about, I hope you enjoy!!

Author

Cláudio Goulart has been working since 1992 with the implementation of corporate solutions. Since 1999, he began his career with CRM deployments, with the most widely used Market Suites such as Vantive, PeopleSoft and Siebel. And since 2008, it has been active with SAP CRM, Hybris & On Premise and Cloud Systems Integration and Salesforce Administration.

Specialist in CRM process definition, and adherence of customer needs to SAP on Premise and Cloud solutions (C4Hana)

Extensive knowledge in implementations of SAP and Hybris solutions in the areas of Call Center, Services, Marketing and Sales.

Experienced integrator of SAP on Premise Solutions (S4Hana and CRM) and SAP Hybris Cloud for Customer (C4Hana), using SAP Cloud Platform and SOA Architecture.

Contact Data

Email: cjsgoulart@gmail.com

Blog: www.modulocrm.com.br

LinkedIn: <https://www.linkedin.com/in/cgoulart/>

Article - Blog Módulo CRM Web Site

Content

- 1. Customization 3
 - 1.1. Description 3
 - 1.2. Target System 3
 - 1.3. Transport Management..... 6
 - 1.4. Defining the Target System 9
 - 1.5. Checking the Transport Logs..... 11
 - 1.6. Release the transport 11
 - 1.7. Activating the transport on Target System 12
 - 1.8. Checking the Object Transported 13

Article - Blog Módulo CRM Web Site

1. Customization

1.1. Description

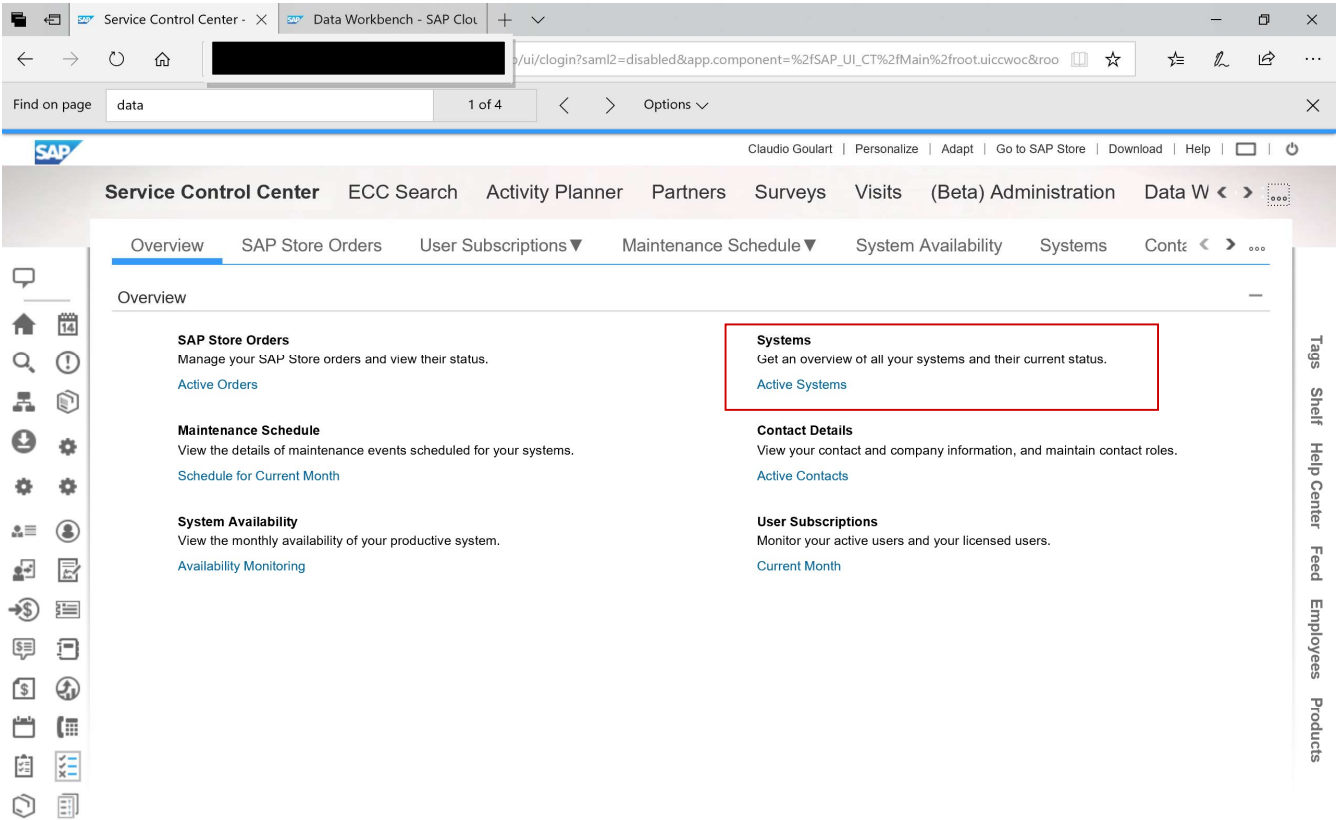
On previous SAP Cloud for Sales version, it was necessary execute some activities manually. For example, Business Roles.

After 1808 version, it's possible to transport some objects, including Business Roles, and save a lot of time during the cutover process.

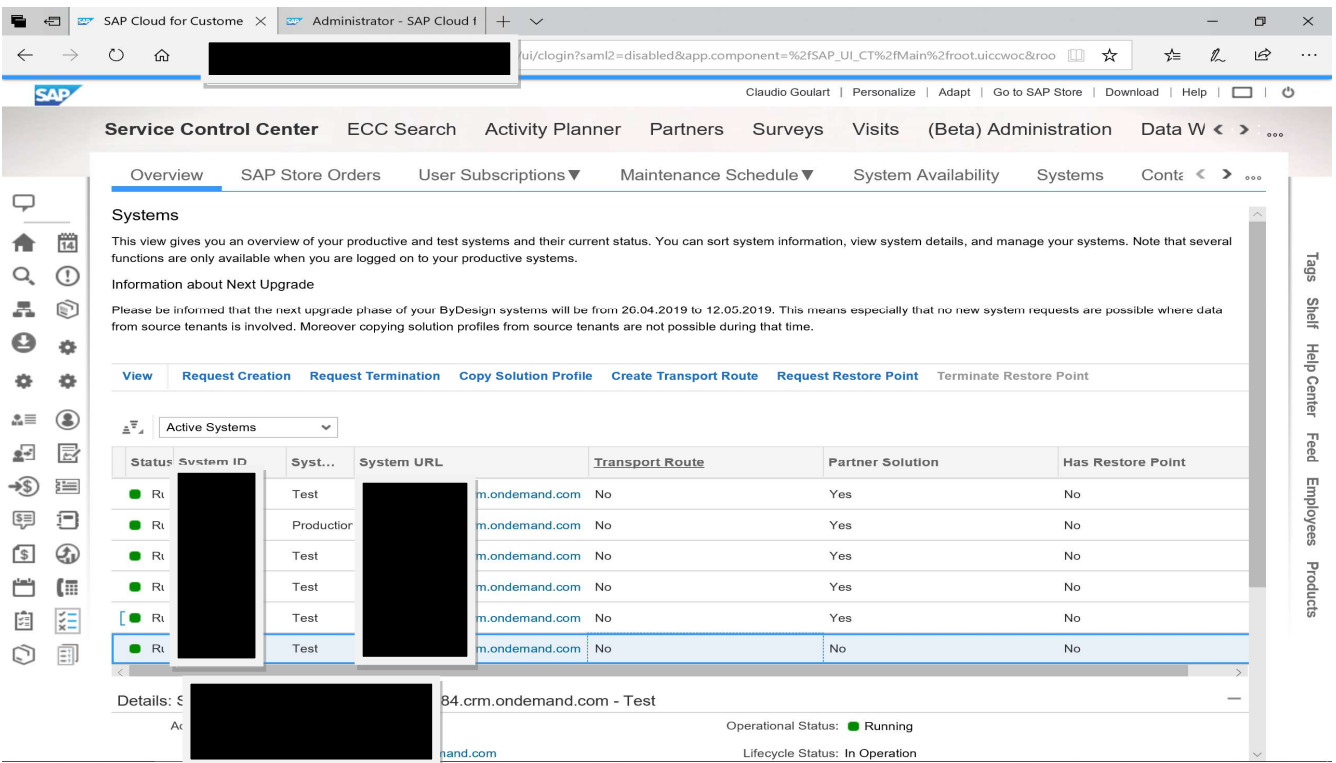
On this document, I will transport a simple business role and demonstrate how to do it.

1.2. Target System

Before transport the objects it is necessary define the Target System. And it's done on "Service Control Center" and link "Active System" on **Source System**.



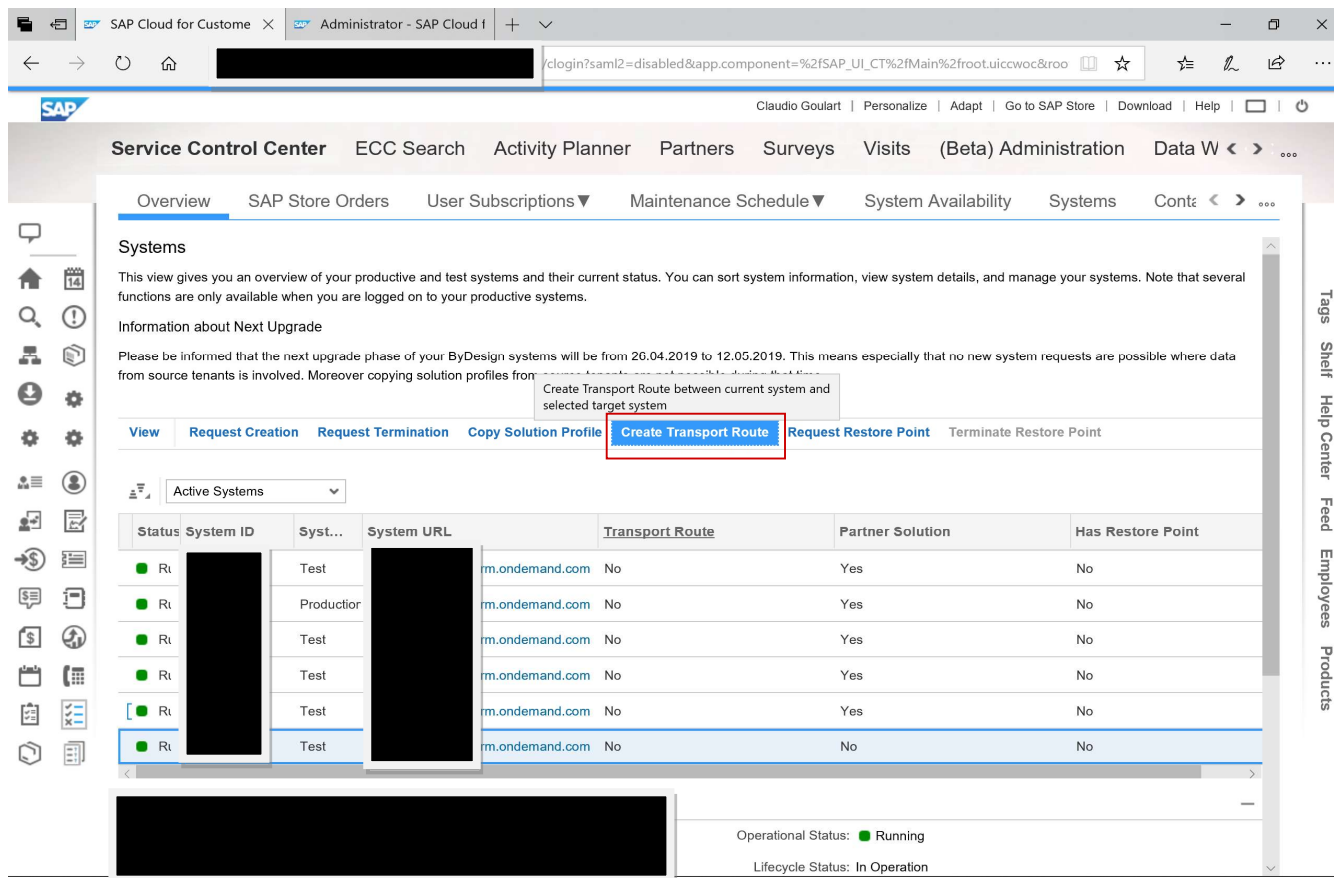
Below, you will find all tenants available by SAP to currently Customer.



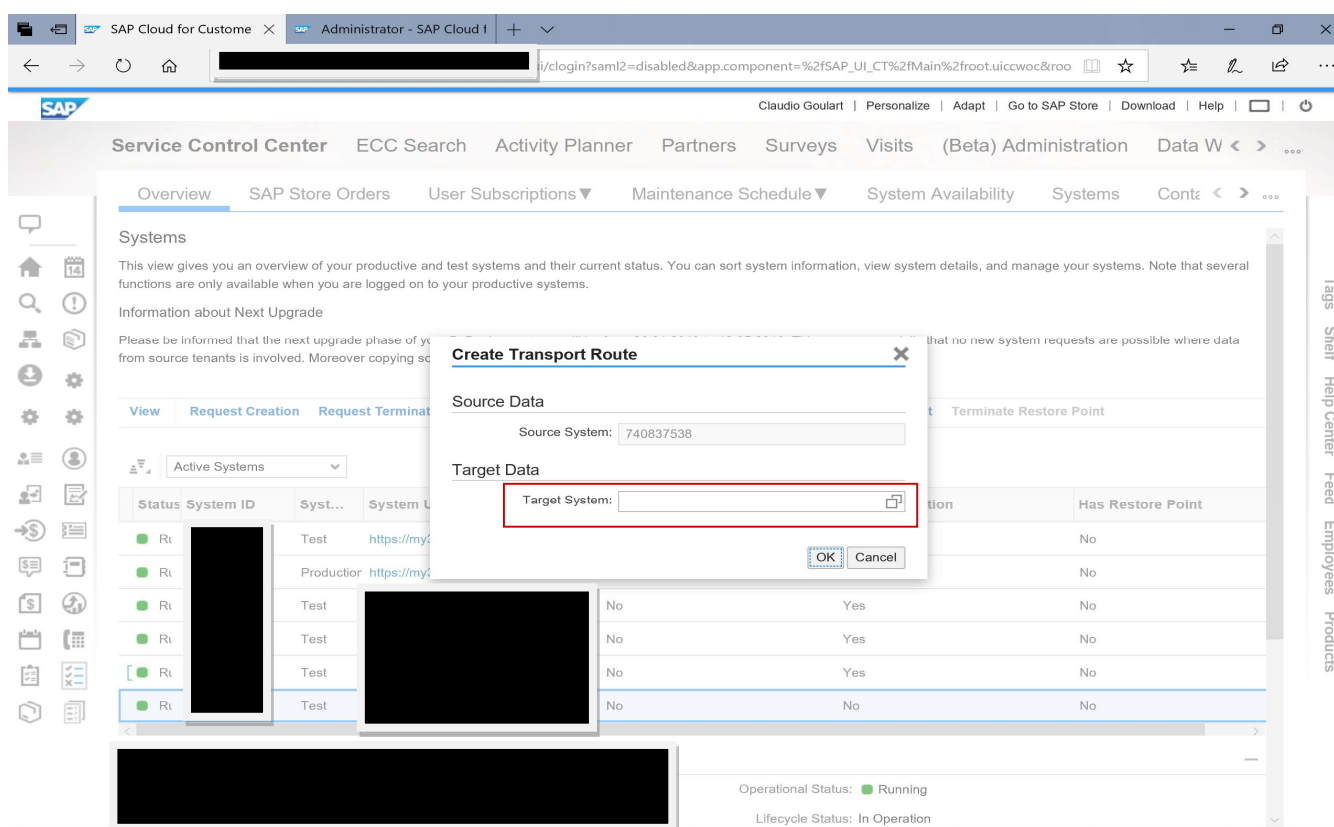
Article - Blog Módulo CRM Web Site

[Customization Guide - SAP C/4hana](#)

To create a transport route, you must click on button “Create Transport Route”.



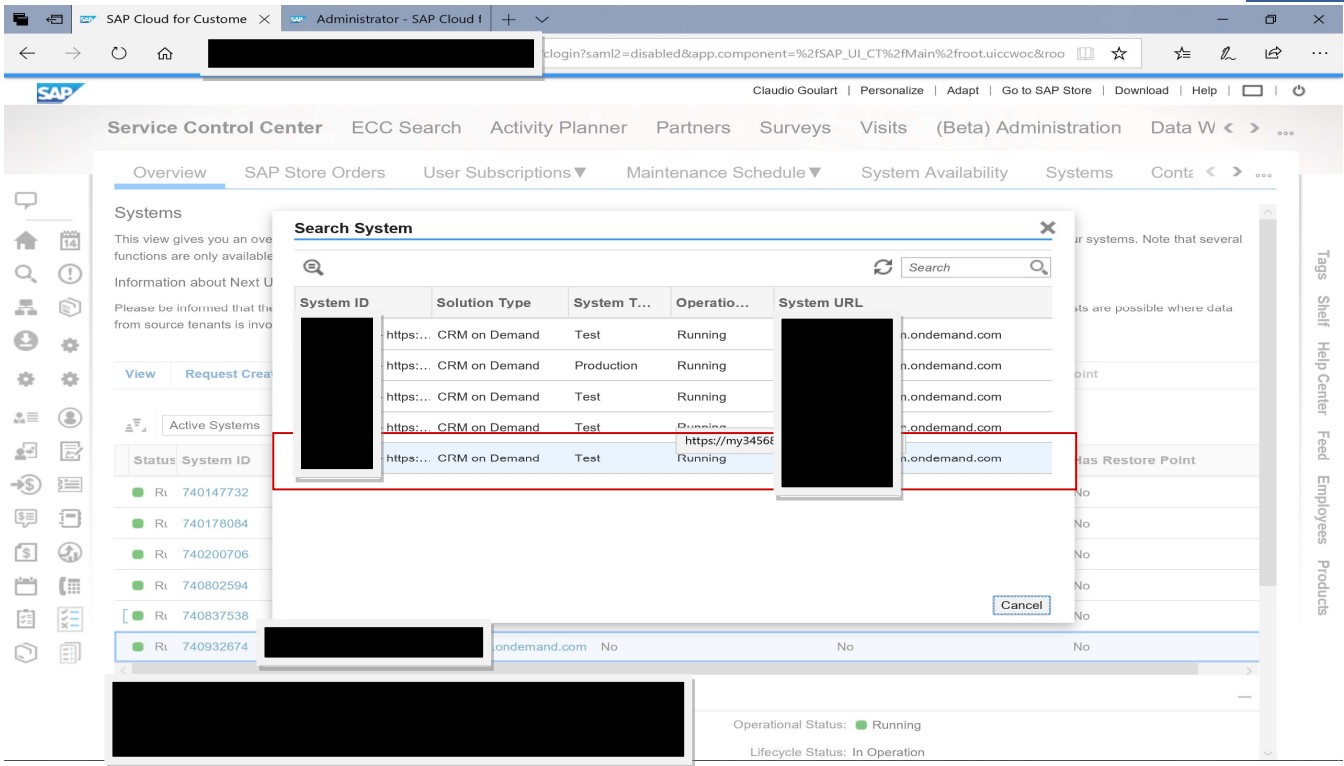
Click on Matchcode of the field “Target System” and a list of available tenant are exhibit.



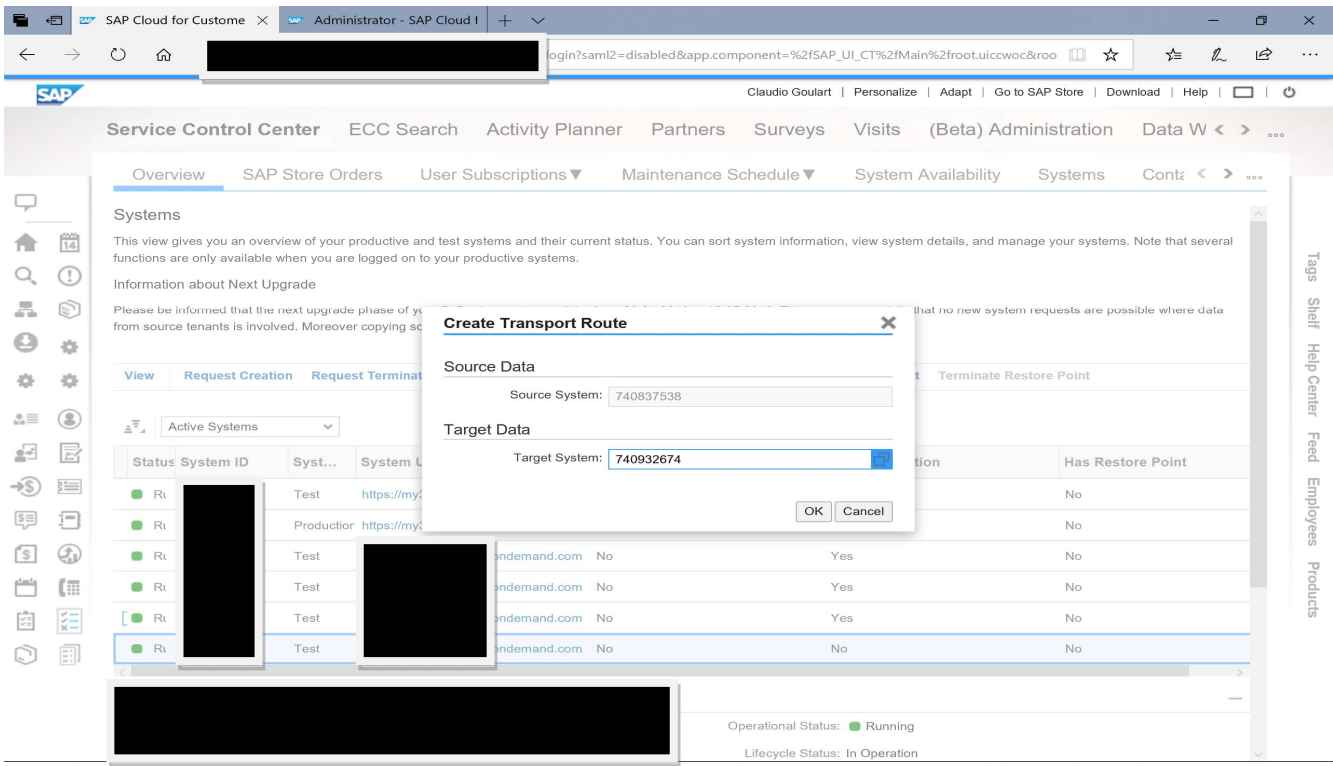
Select the target system

Article - Blog Módulo CRM Web Site

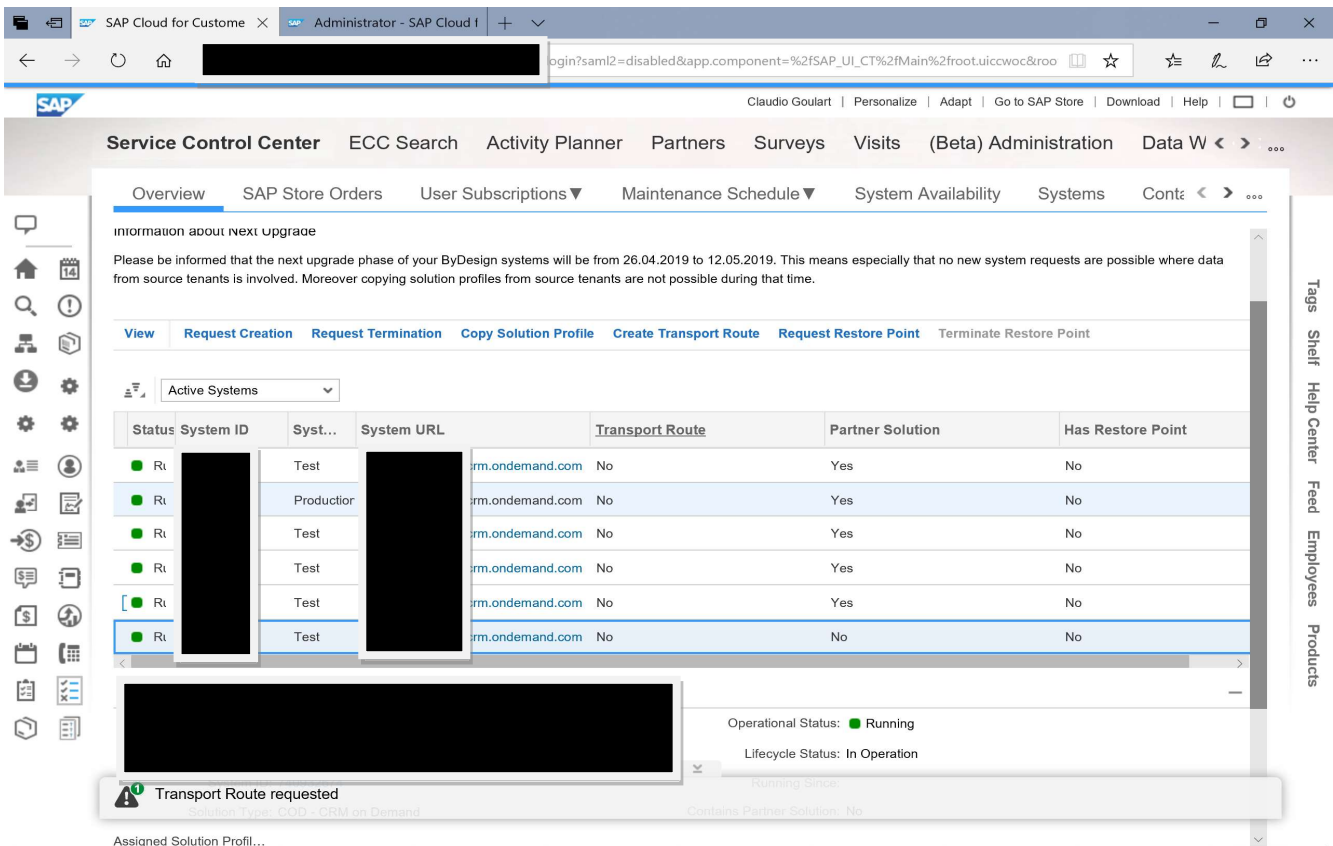
Customization Guide - SAP C/4hana



And then OK.



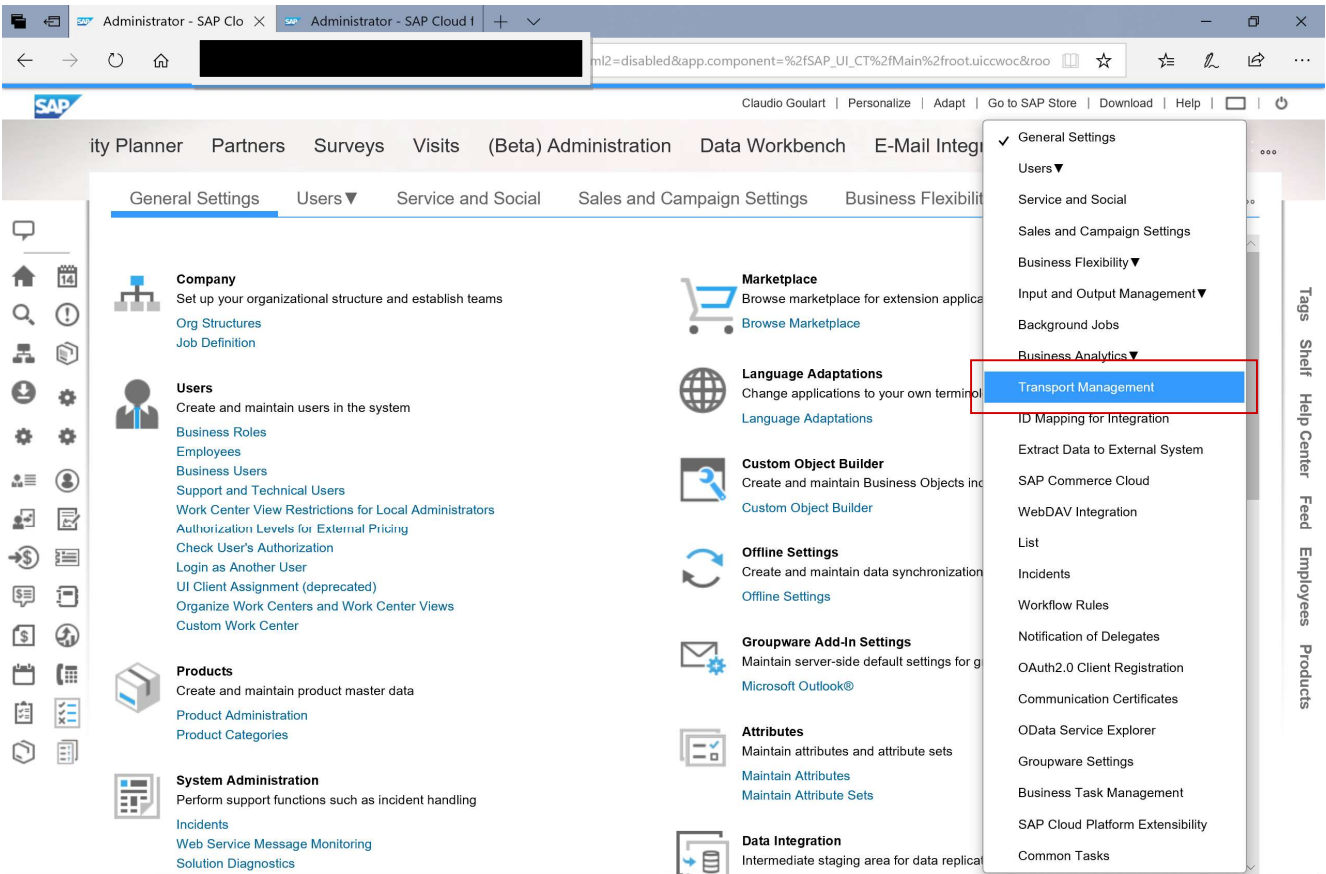
Now You have created the target system on C4C.



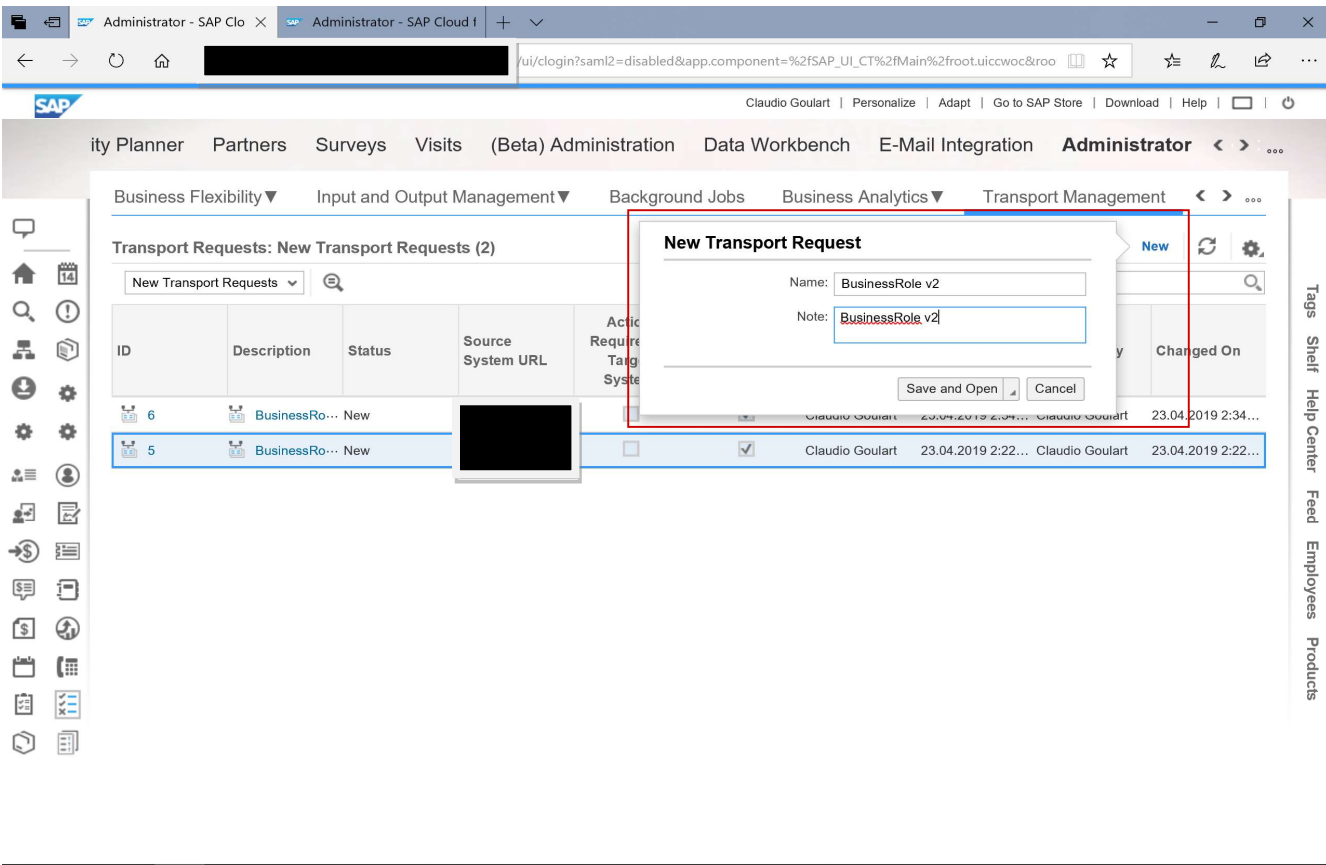
Article - Blog Módulo CRM Web Site

1.3. Transport Management

Now, let's create effectively the Transport objects. Clicking on link "Transport Management" on Administrator workcenter.



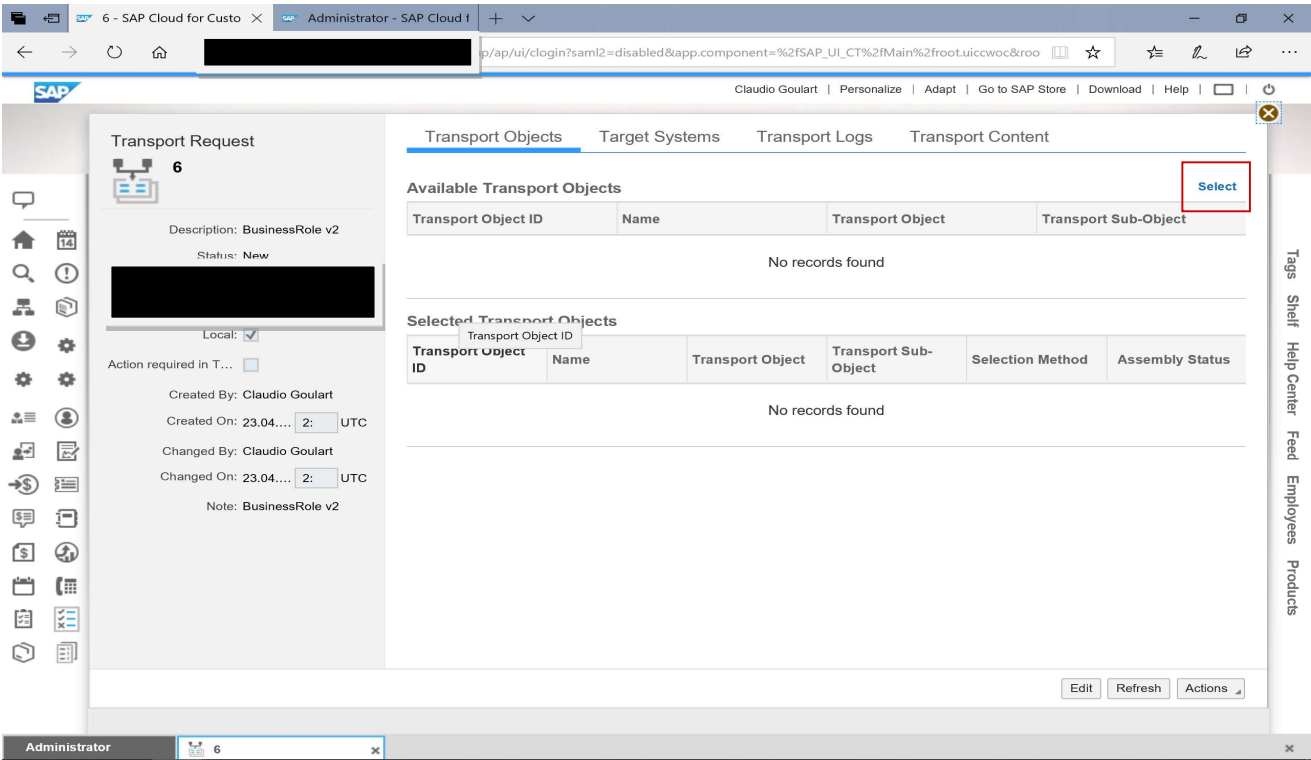
Click on button New and fulfill the name and a brief note to easily identify the transport.



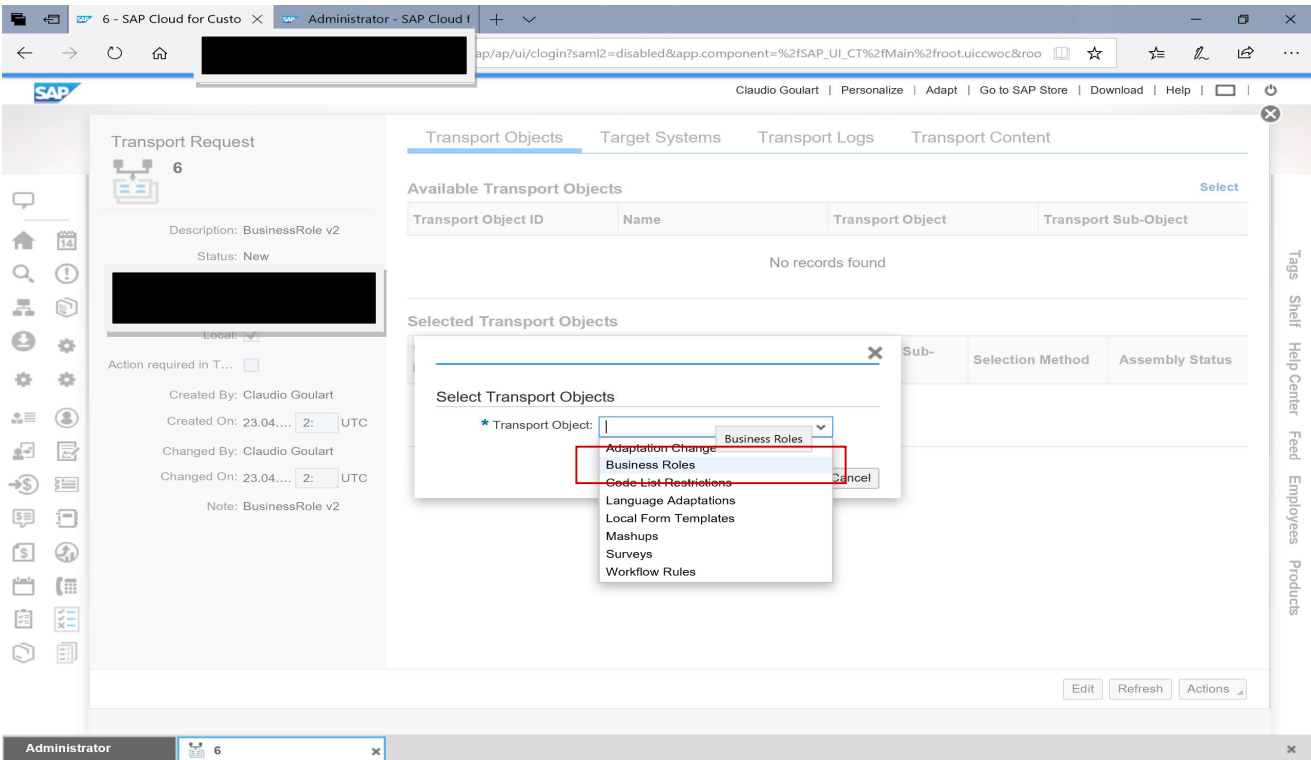
Article - Blog Módulo CRM Web Site

Customization Guide - SAP C/4hana

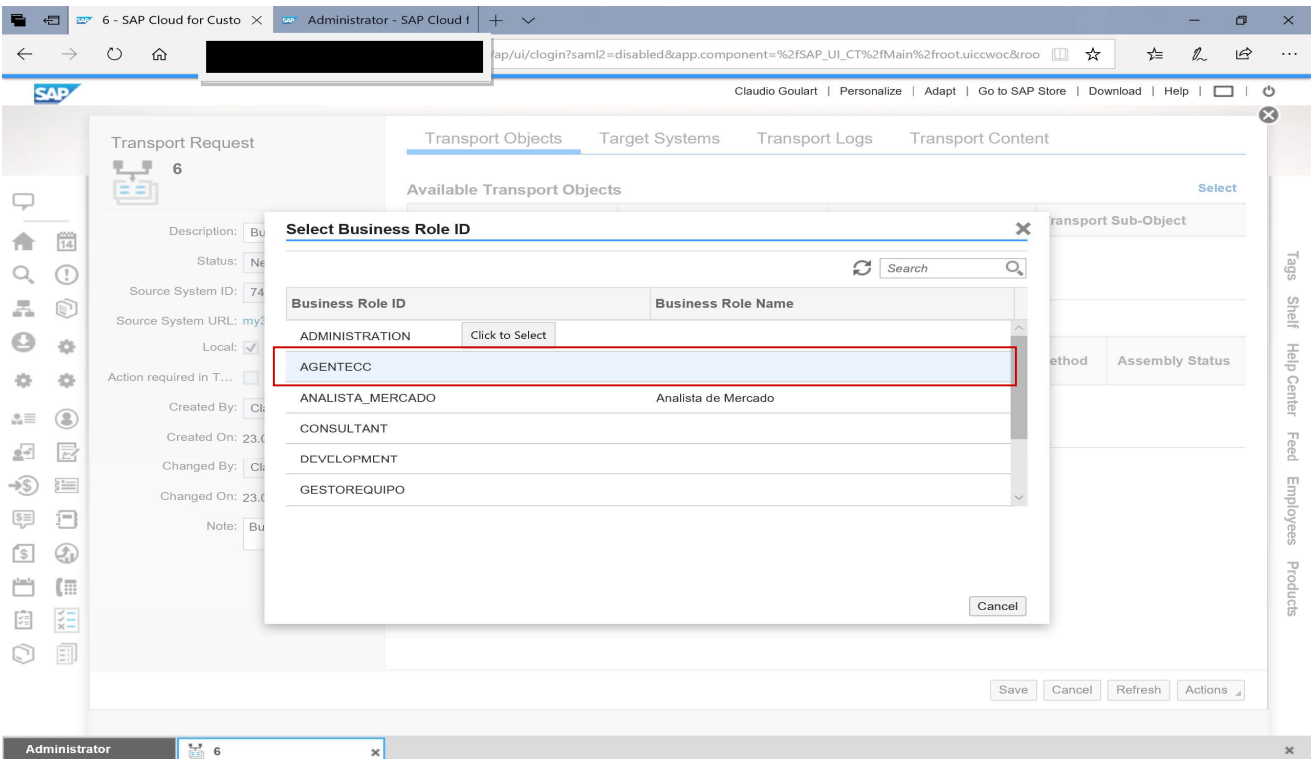
Now, let’s add the object. Click on the button “Select”



As mentioned, I will transport a business role. So, I will select the “Business Role” object to be transported.



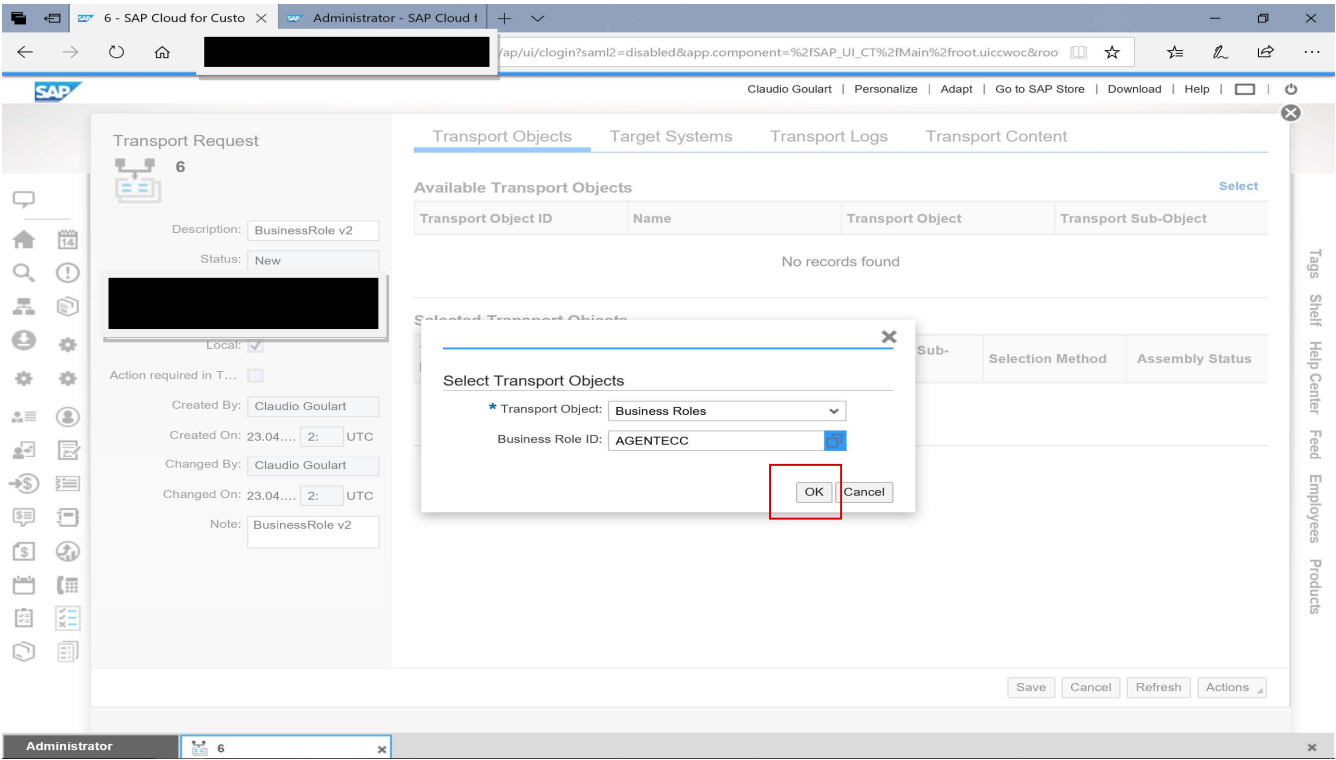
A list of Business Roles available on source system are listed. I will transport the AGENTCC.



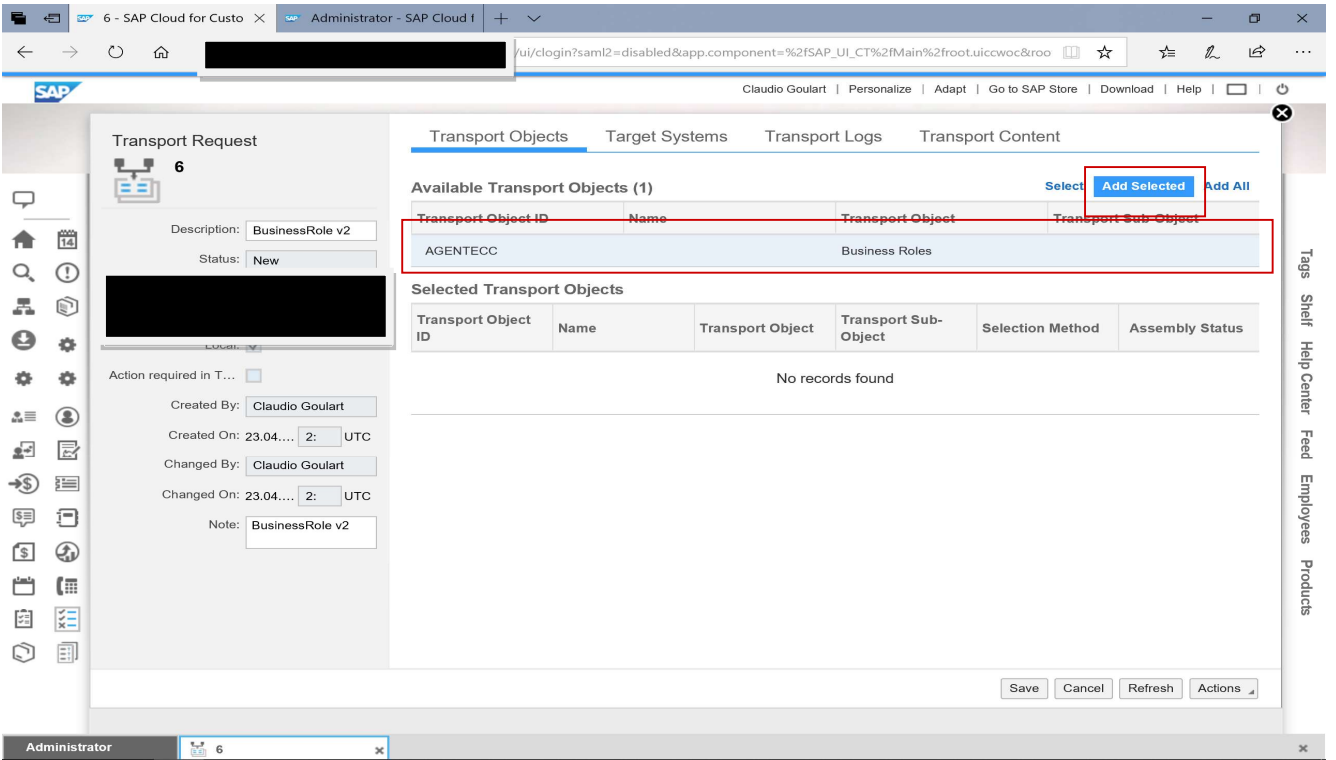
Article - Blog Módulo CRM Web Site

Customization Guide - SAP C/4hana

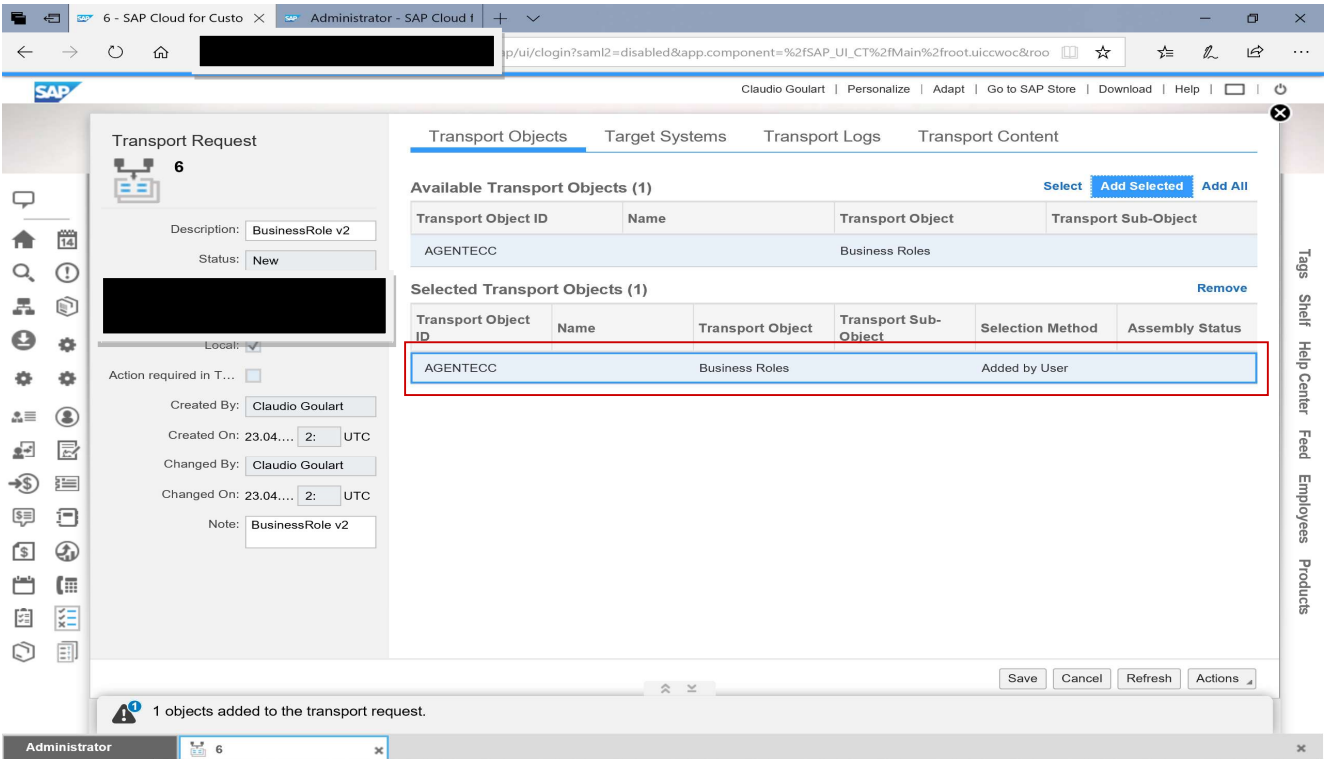
And then, OK



Click on the line “AGENTCC” and then click on button “Add Selected”



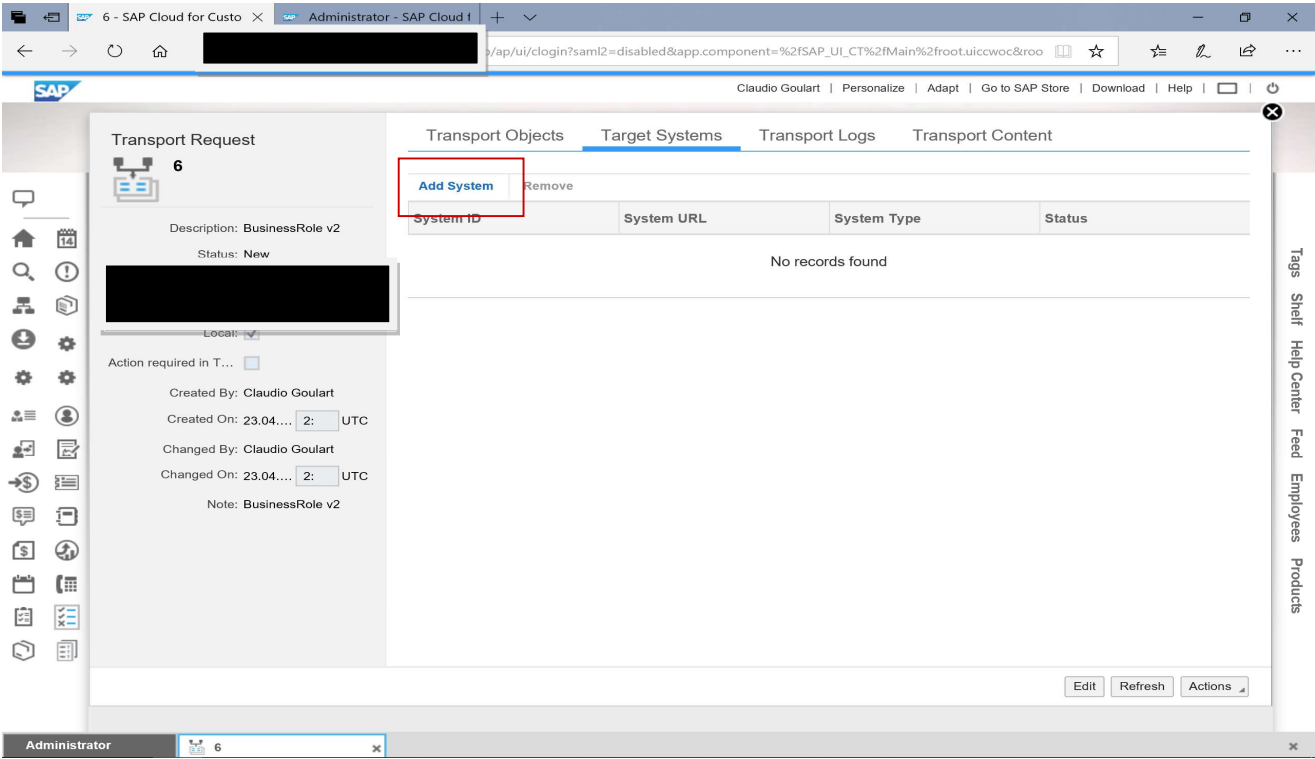
You notice that the business role AGENTECC is transport to the next list.



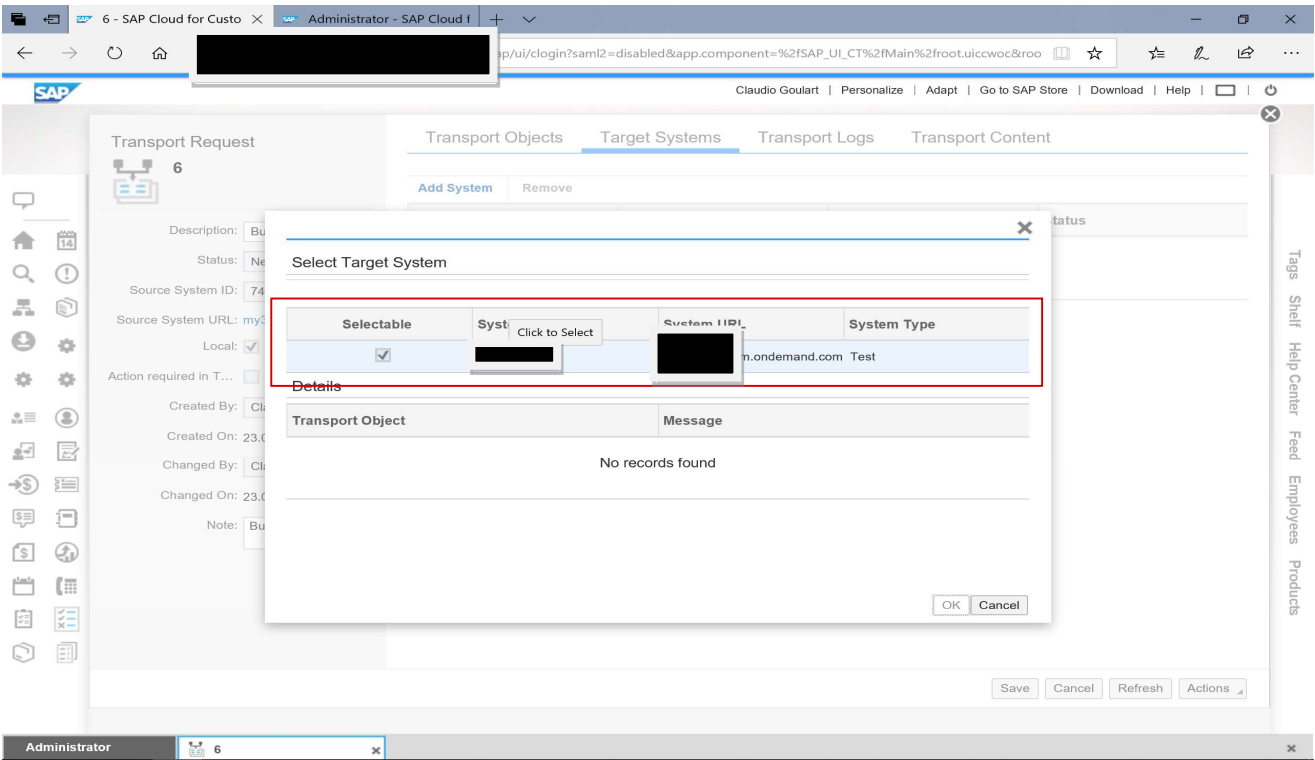
1.4. Defining the Target System

Do you remember when I created a Target System? That’s right!! I will use it here.

Click on button “Add System”

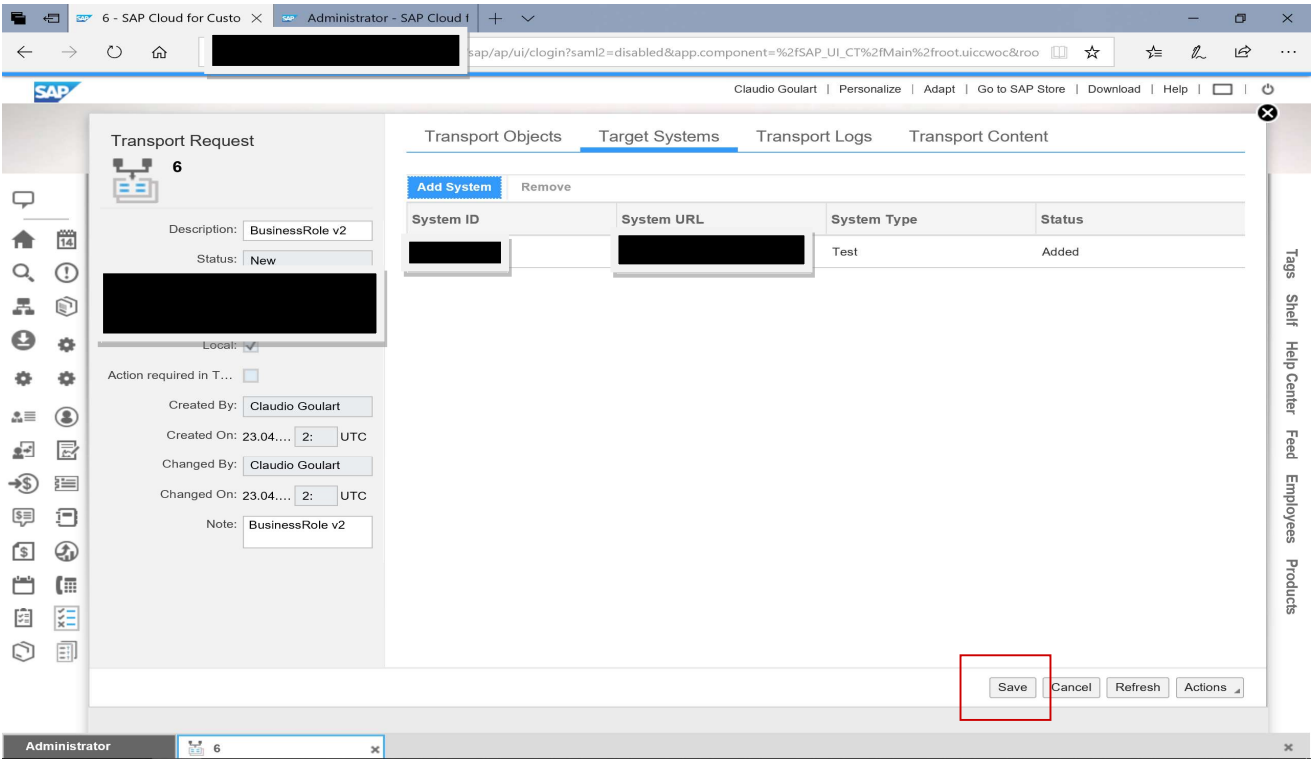


And then, my target system is available. Select the record and then OK.

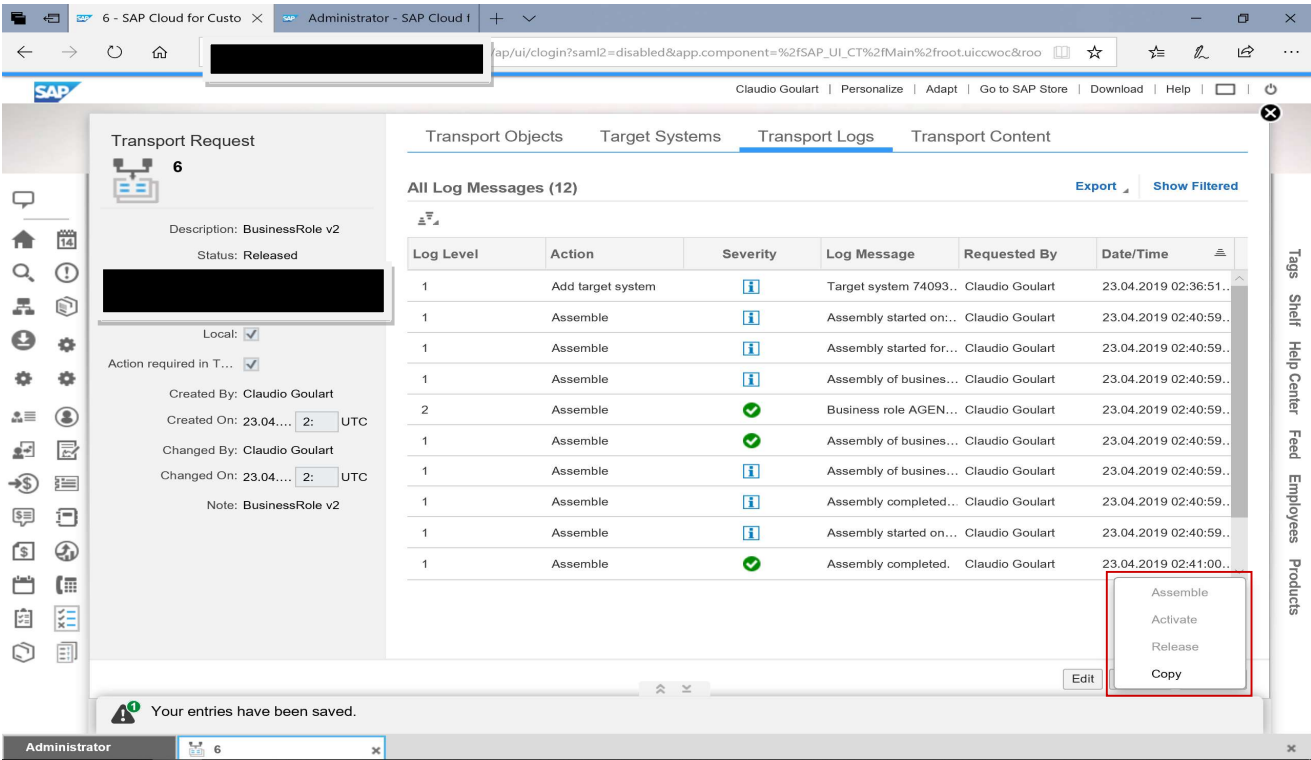


Article - Blog Módulo CRM Web Site

The target system is defined, then save the record.

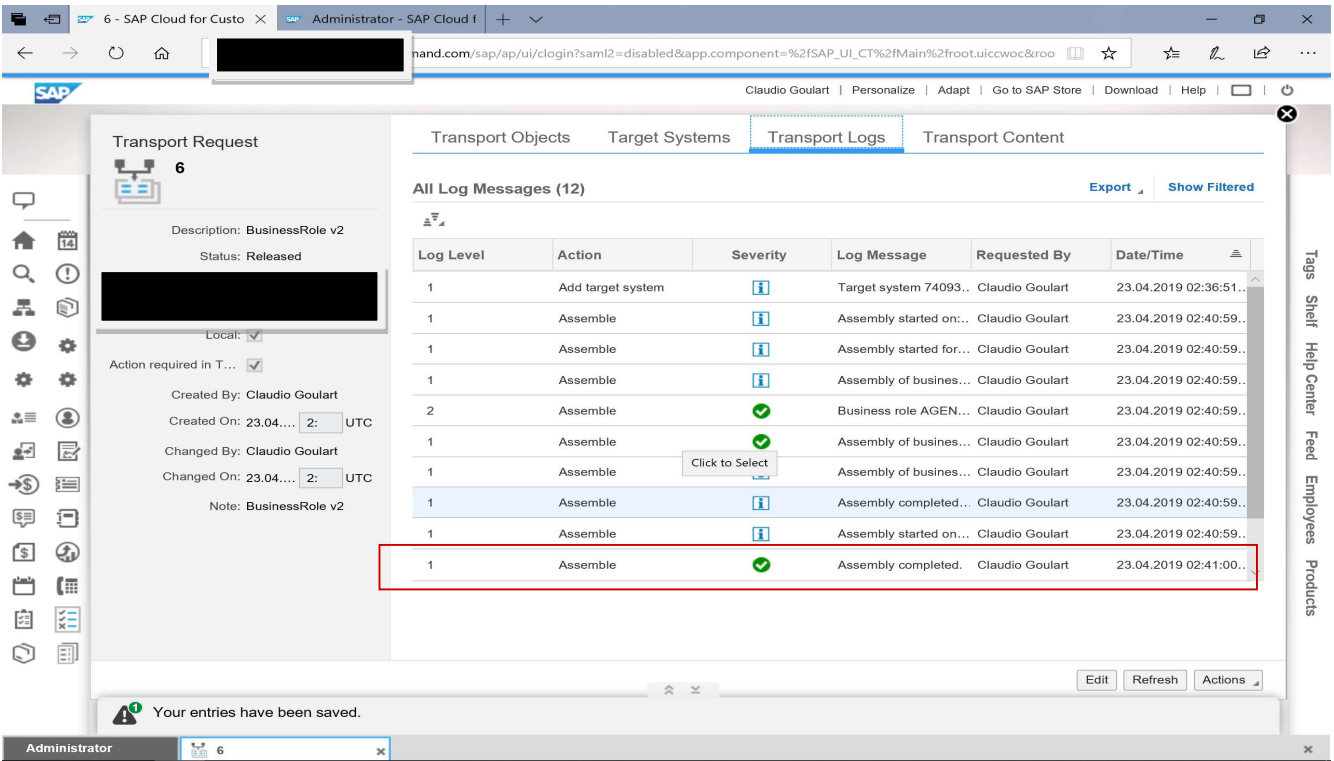


Now click on button “Action-Assemble” and the magic starts.



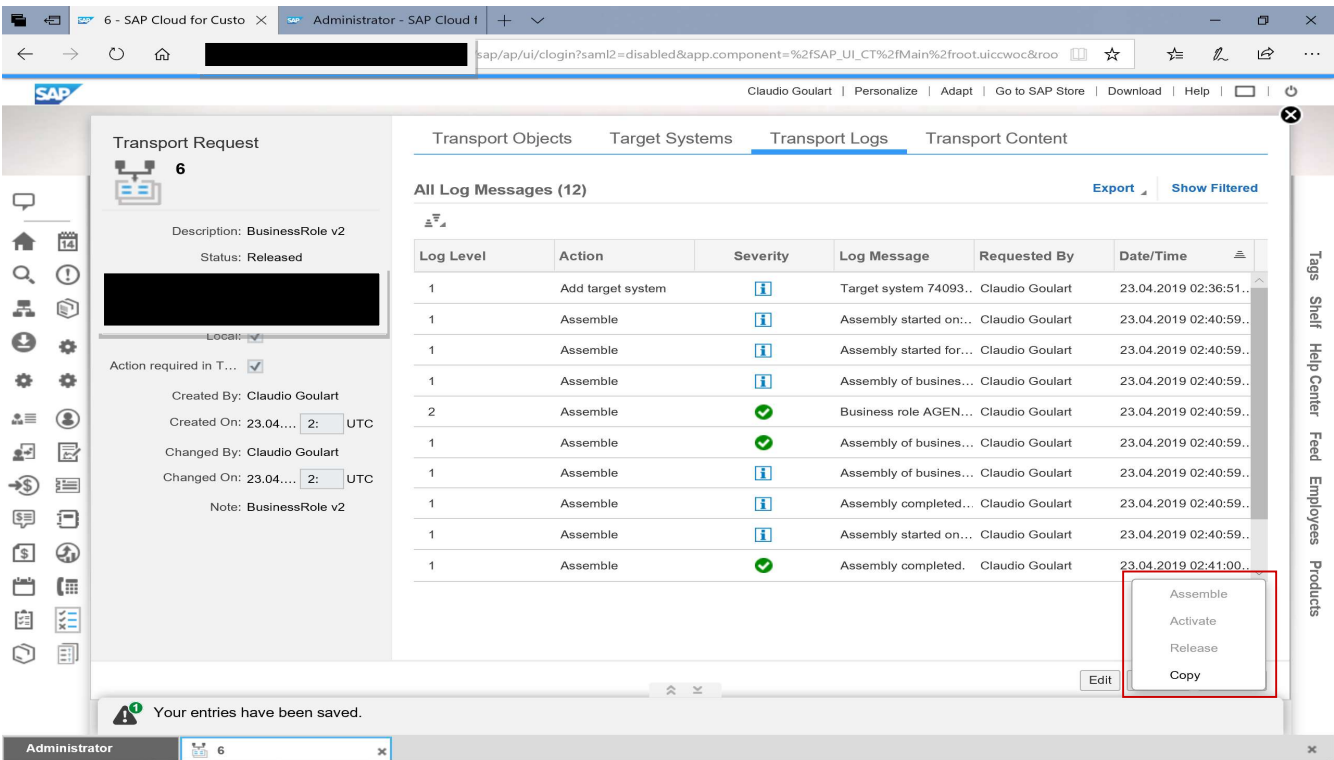
1.5. Checking the Transport Logs

After that, on screen “Transport Logs” the process starts. If everything is OK, let’s continue.



1.6. Release the transport

After the last task is “Assembly completed” the transport is ready to be released. Then click on button “Action->Release”.

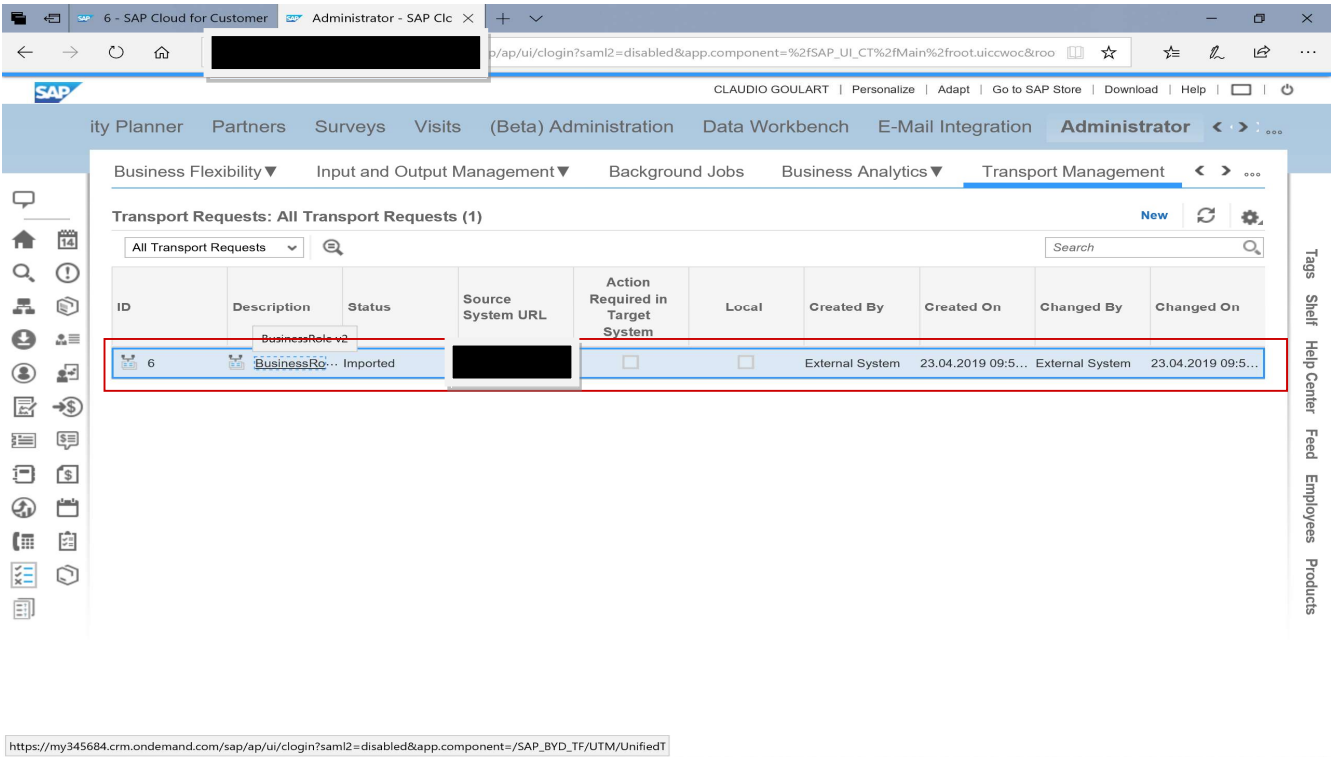


Article - Blog Módulo CRM Web Site

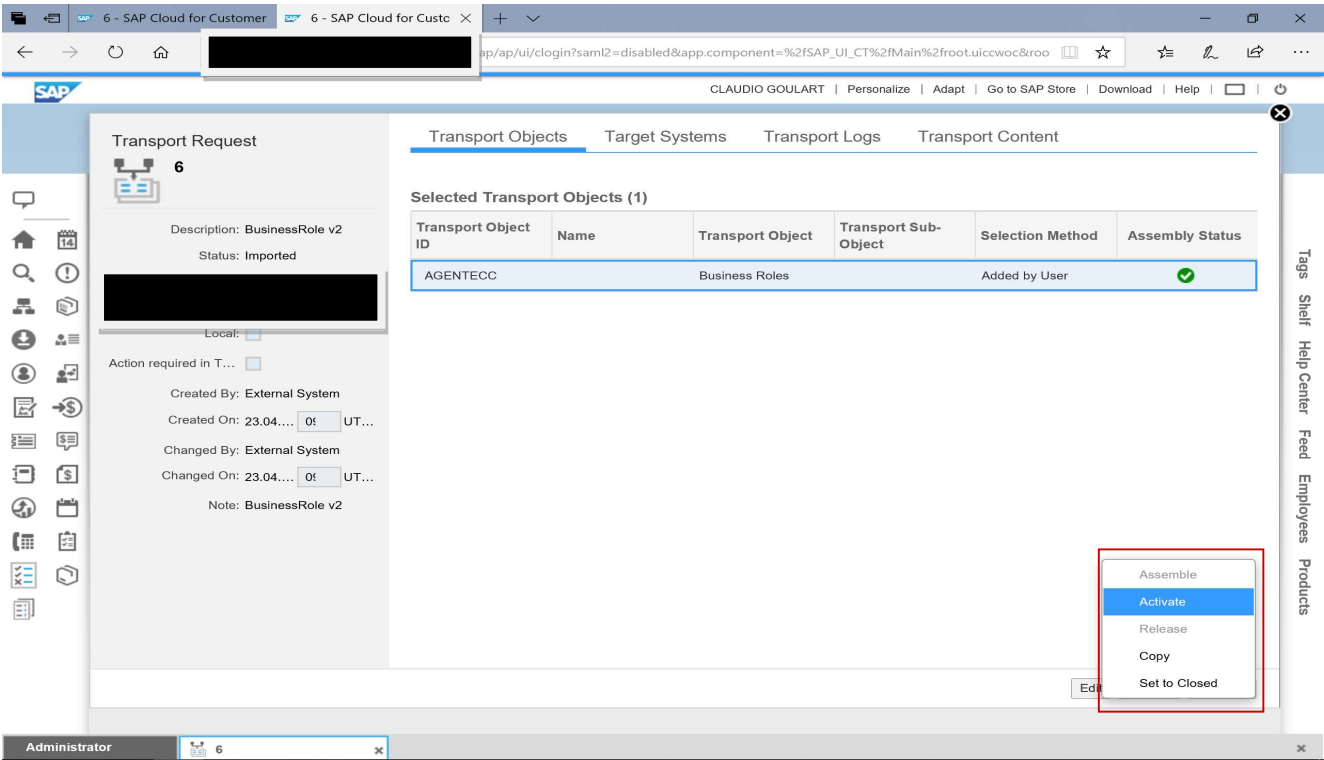
Customization Guide - SAP C/4hana

1.7. Activating the transport on Target System

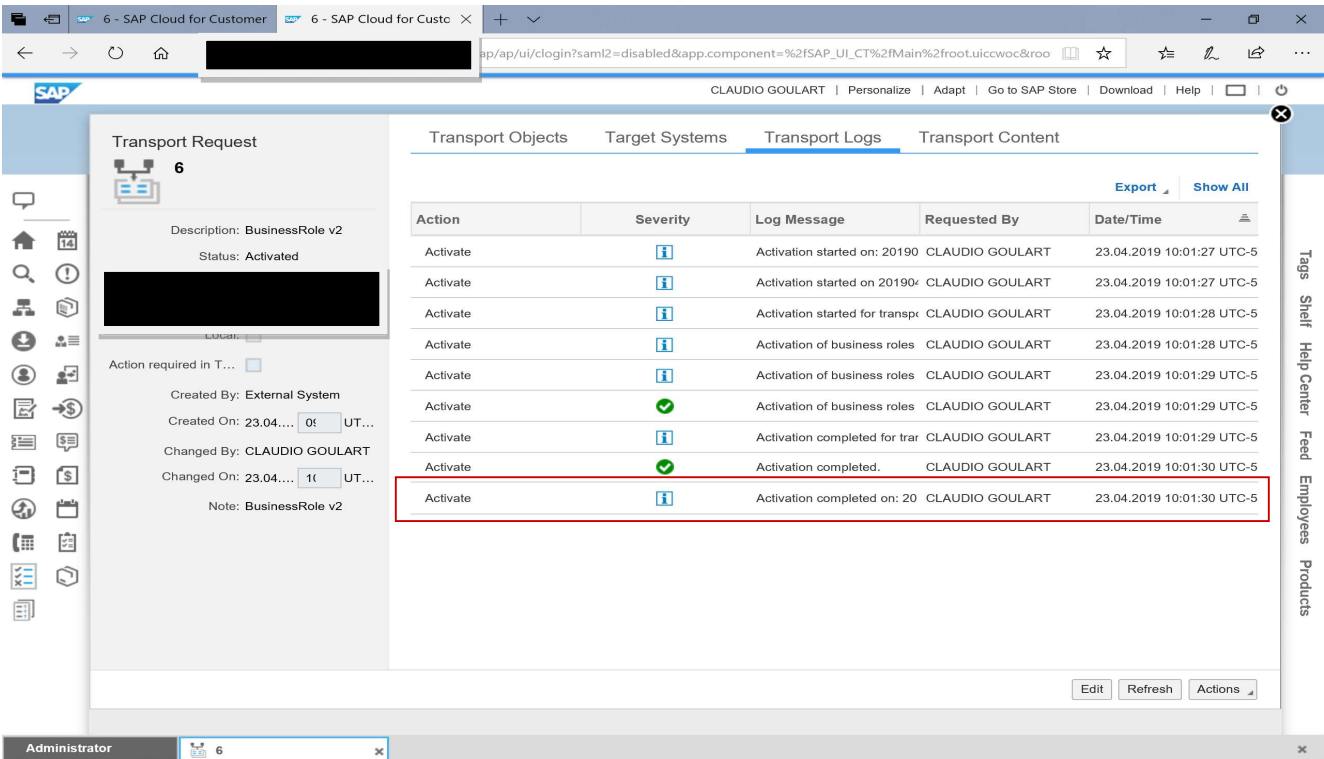
Now, on **TARGET SYSTEM** I am going to “Transport Management” and then I see my activity. Click on it.



I check if all it is OK, and then, click on button “Action->Activate”



The transport logs didn't returned any error. So far so good.

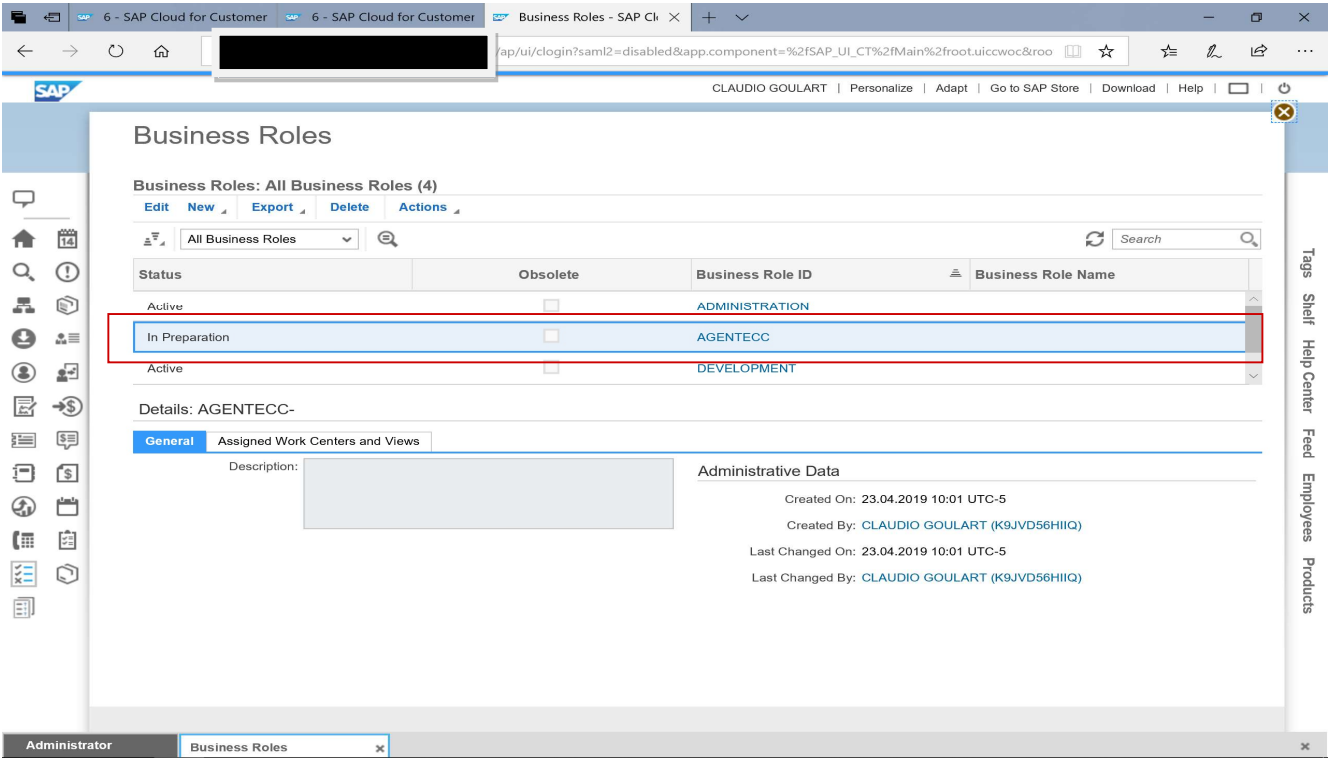


Article - Blog Módulo CRM Web Site

1.8. Checking the Object Transported

Now, let's check the results.

On Business Roles screen, my BUSINESS ROLE AGENTECC was created. Fantastic don't you think??



I hope you enjoy it. I do!!