

## Version

This article was created by SAP C4C (1702) Version

## Brief Description

During a Project Implementation, there are many areas and people responsible for Sales, Services, Integration and Migration Data. And of course, as a good Migration Consultant, you must understand how the legacy data works. And to do it, is very important access of legacy Data Base. Today we got plenty of software to access database, however, it is necessary software license, that your customer not necessary want to or must make it available to you.

That's my point!!

SAP Cloud Application Studio has a feature to help you out, and give a way to access External Database as Microsoft Access, Microsoft SQL Server, Oracle and more. What is amazing, no software license.

I hope you enjoy!!

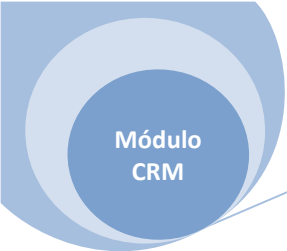
## Author

Claudio Goulart has been working since 1992 with the implementation of corporate solutions. Since 1999, he began his career with CRM deployments, with the most widely used Market Suites such as Vantive, PeopleSoft and Siebel. And since 2008, it has been active with SAP CRM, Hybris and On Premise and Cloud Systems Integration.

Specialist in evaluation, process definition, and adherence of customer needs to SAP on Premise and Cloud solutions.

Extensive knowledge in implementations of SAP and Hybris solutions in the areas of Call Center, Services, Marketing and Sales.

Experienced integrator of SAP on Premise Solutions (ECC and CRM) and SAP Hybris Cloud for Customer (C4C), using SAP Hana Connection Integration, SAP PI / PO and SOA Architecture.



# Article - Blog Módulo CRM

Content

- 1. Customization..... 3
  - 1.1. Description..... 3
  - 1.2. Legacy Database..... 3
  - 1.3. Connecting to External Database ..... 3
  - 1.4. Exploring External Database ..... 6

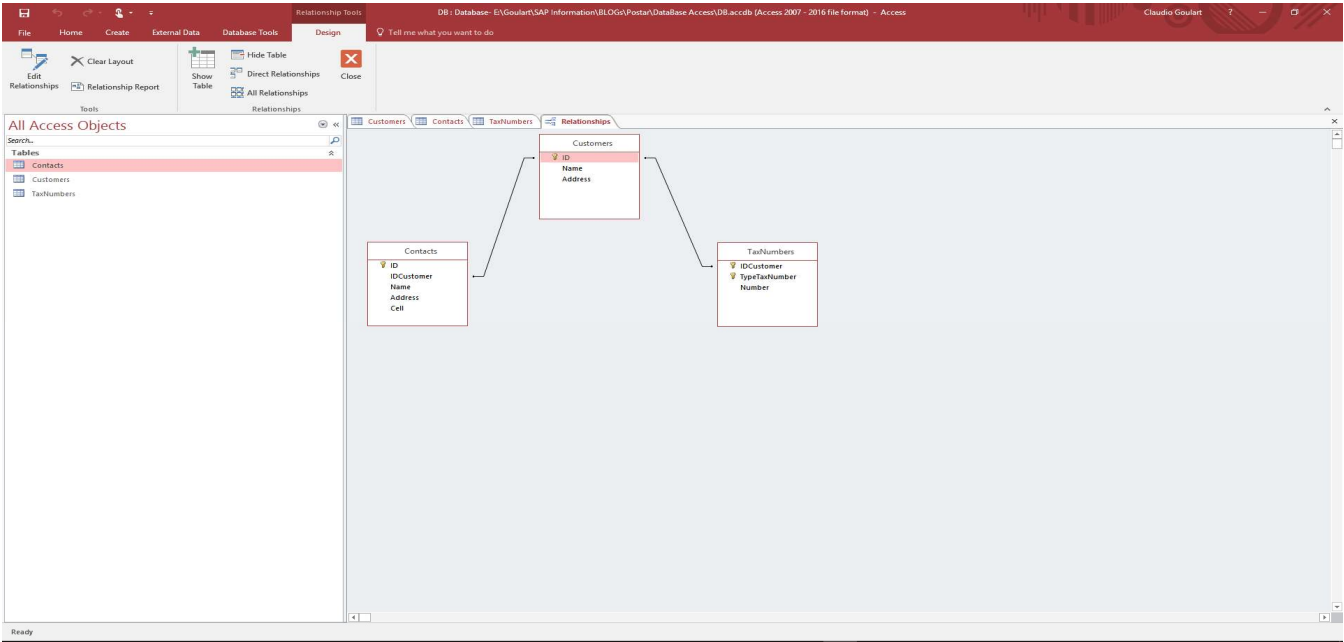
1. Customization

1.1. Description

On this document, I will demonstrate how to access External Database Microsoft Access. It's simple, but all process mentioned on this article is relevant for SQL Server and Oracle.

1.2. Legacy Database

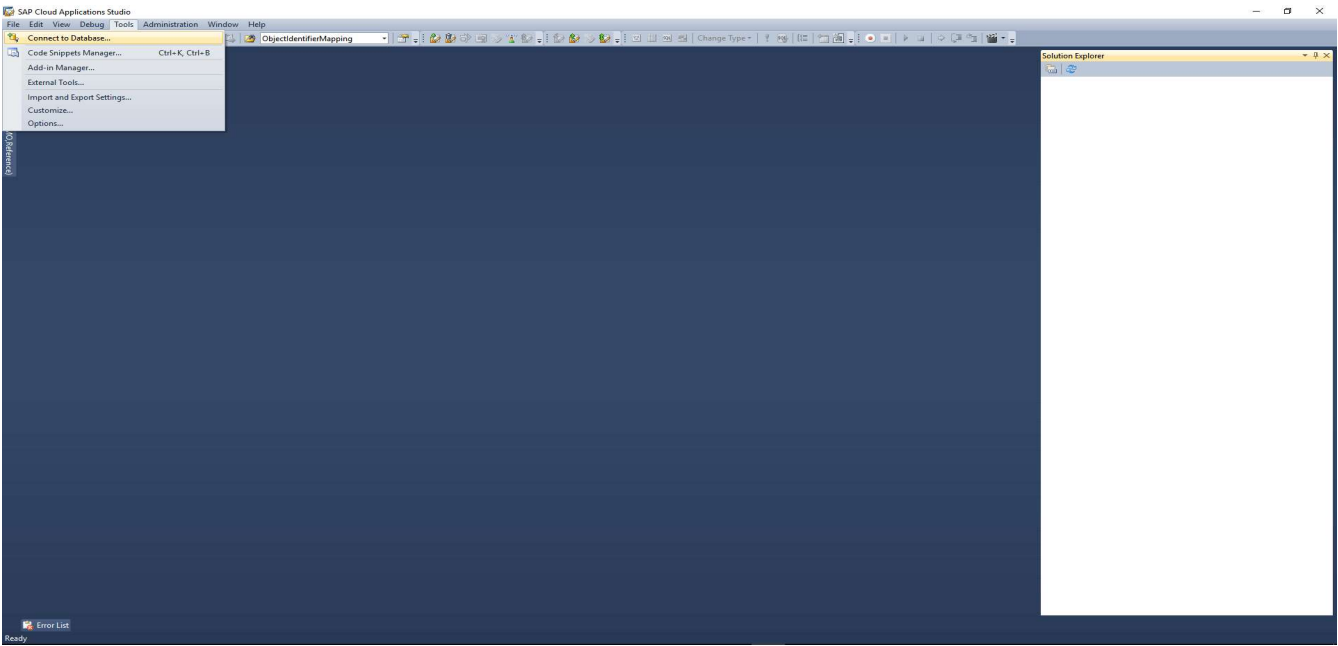
On this section I created a small database with 3 tables related each other's.



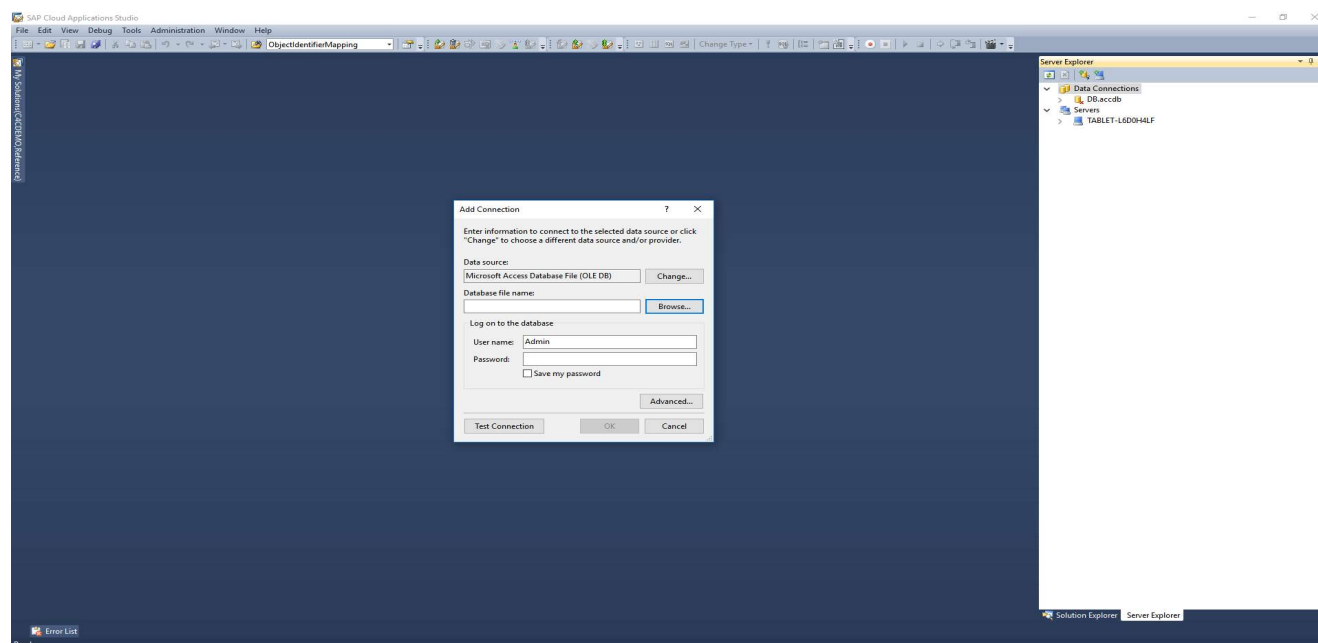
1.3. Connecting to External Database

Now, I will demonstrate how to connect to external database.

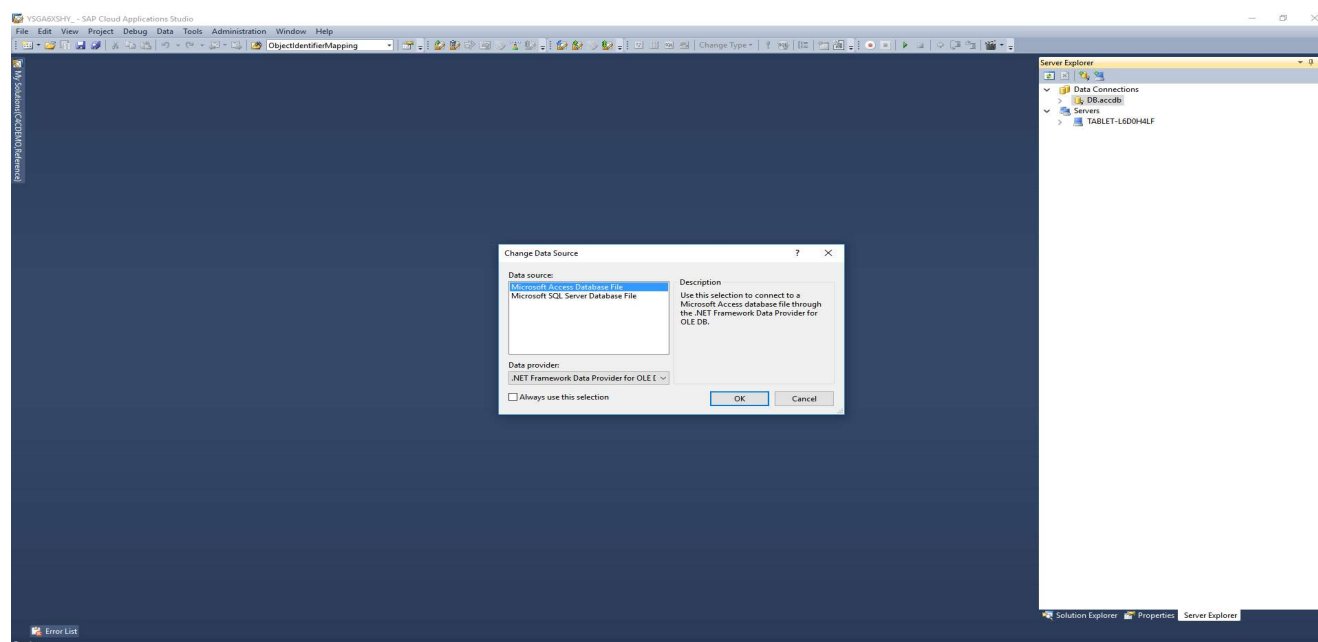
On menu Tools, choose “Connect to Database”



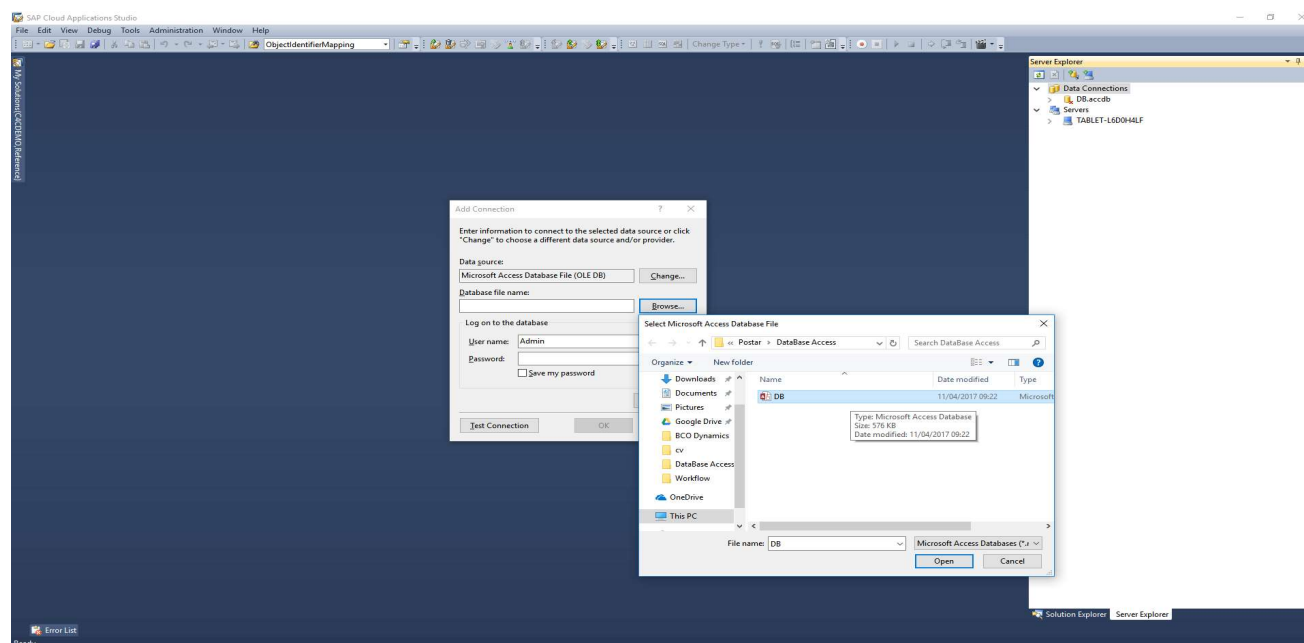
Now, it's required what external database would you like to access. And to explore the functionality, click on Data Server change button.



Is listed all database available to connect in a standard way. However, this list can be increase creating specific data source locally.

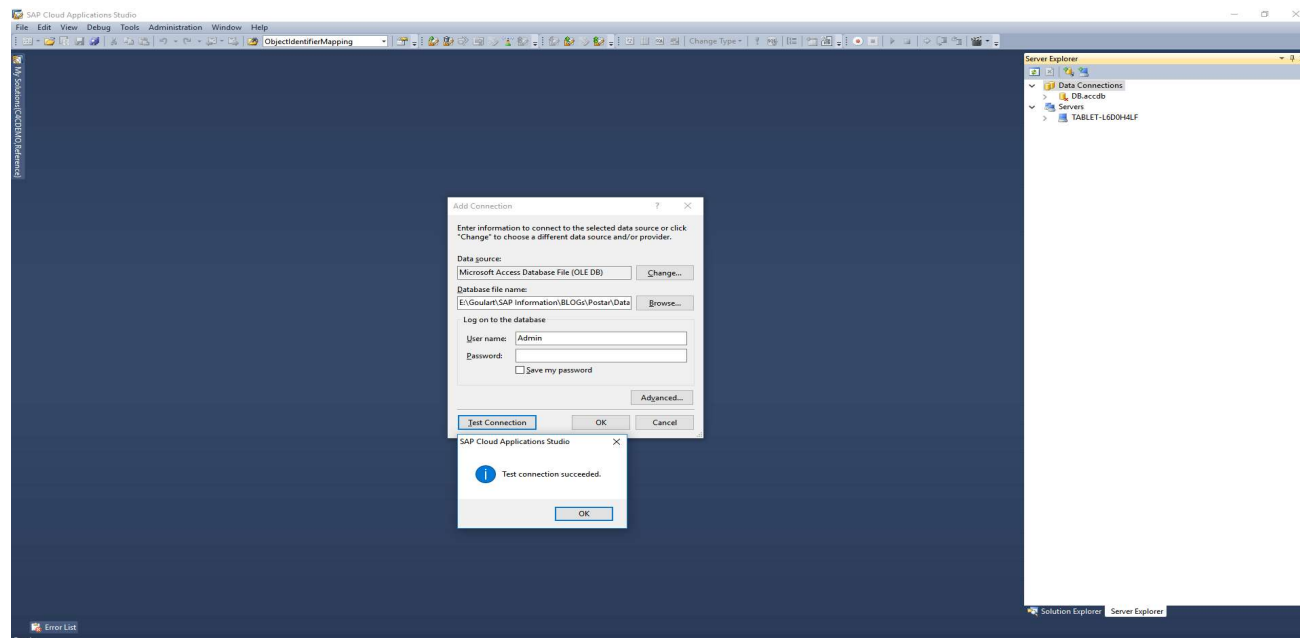


Back to connect screens, I choose Microsoft Access for our article. And then I click on Browse button to find Access Database file.

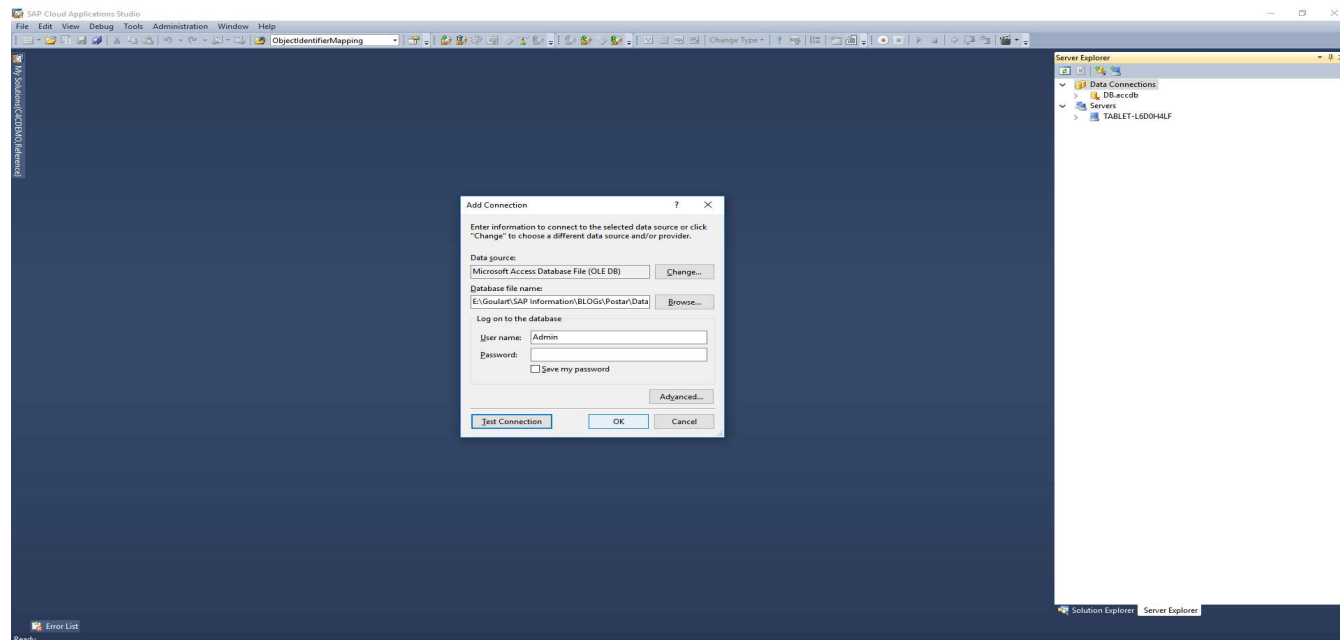


Of course, a corporative or departmental database has a user and password. On this case, provide it.

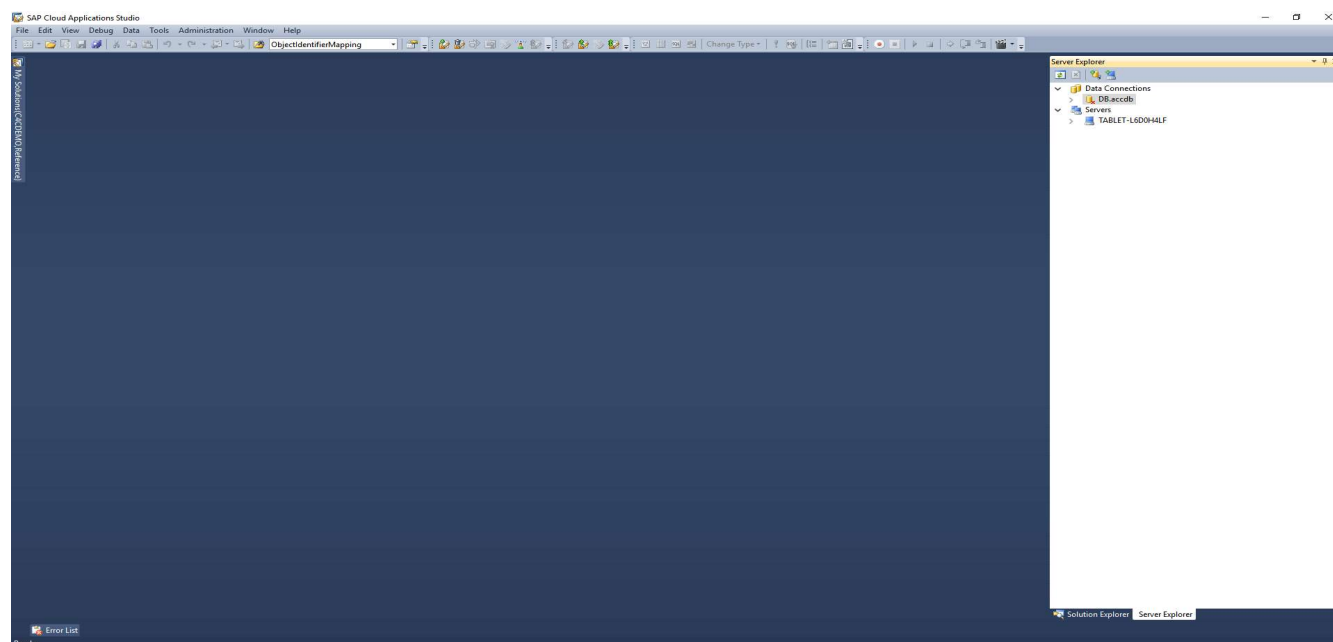
Click on “Test Connection” button to test our connection.



If everything is cool, click on OK button to access database.



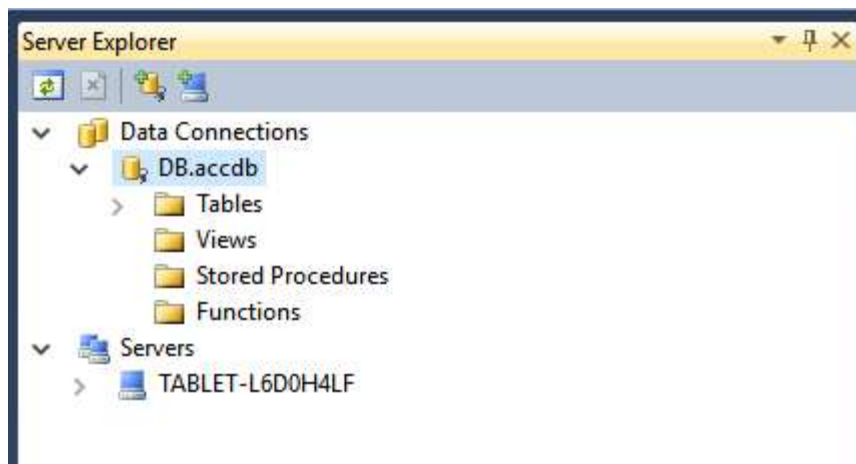
Fantastic!! Connect without problems.



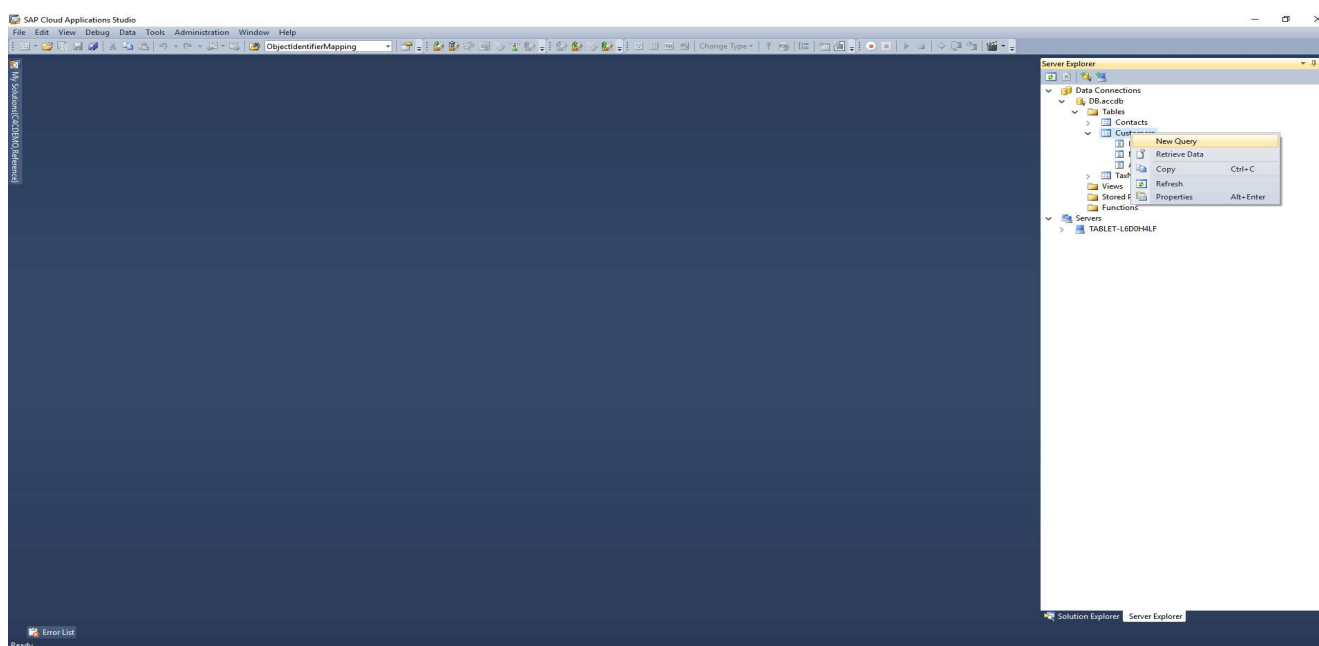
## 1.4. Exploring External Database

After database login was successful, let's explore database objects.

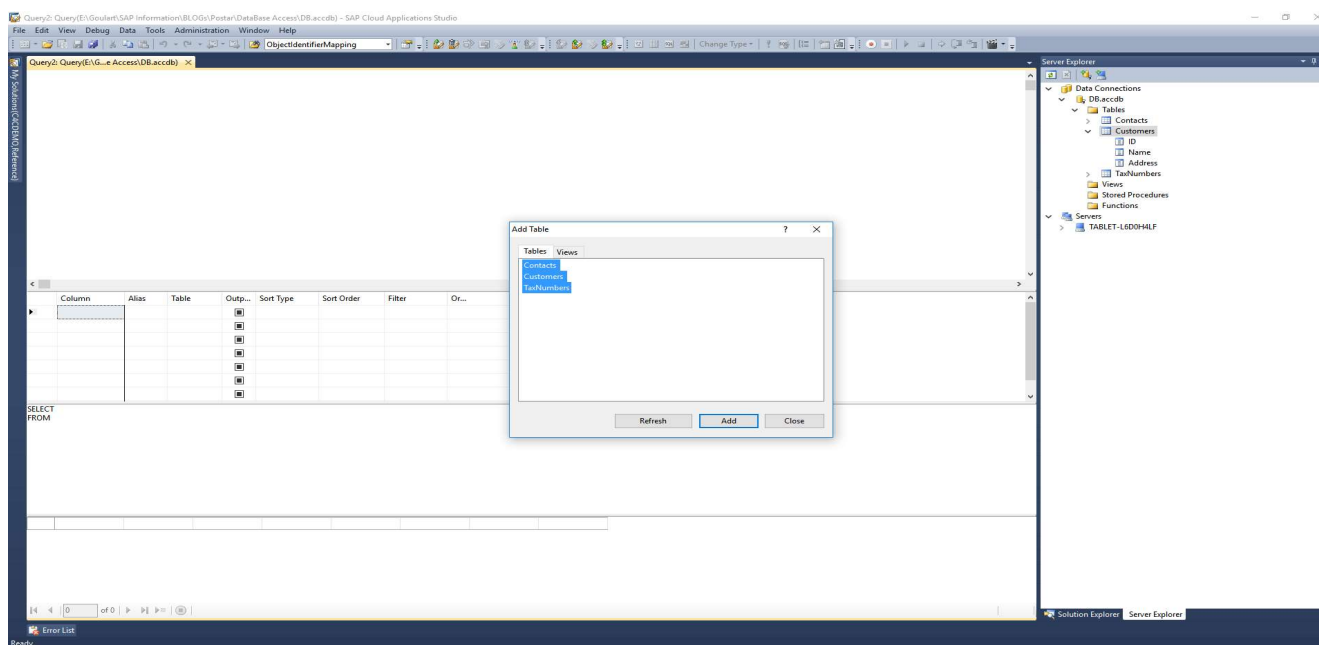
On the left, below the database were list 4 folders:



Open table folder, and mouse right click, choose "New Query"

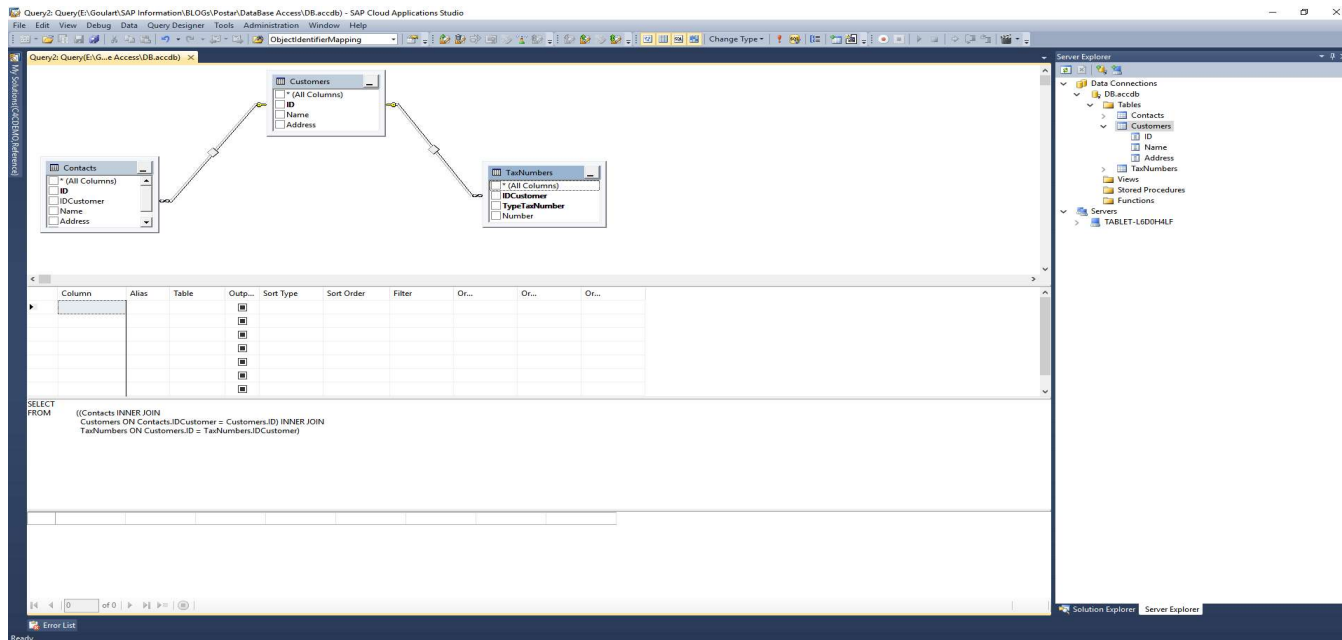


A list of all tables was list, and then, you can choose one or many tables. I choose all of them.

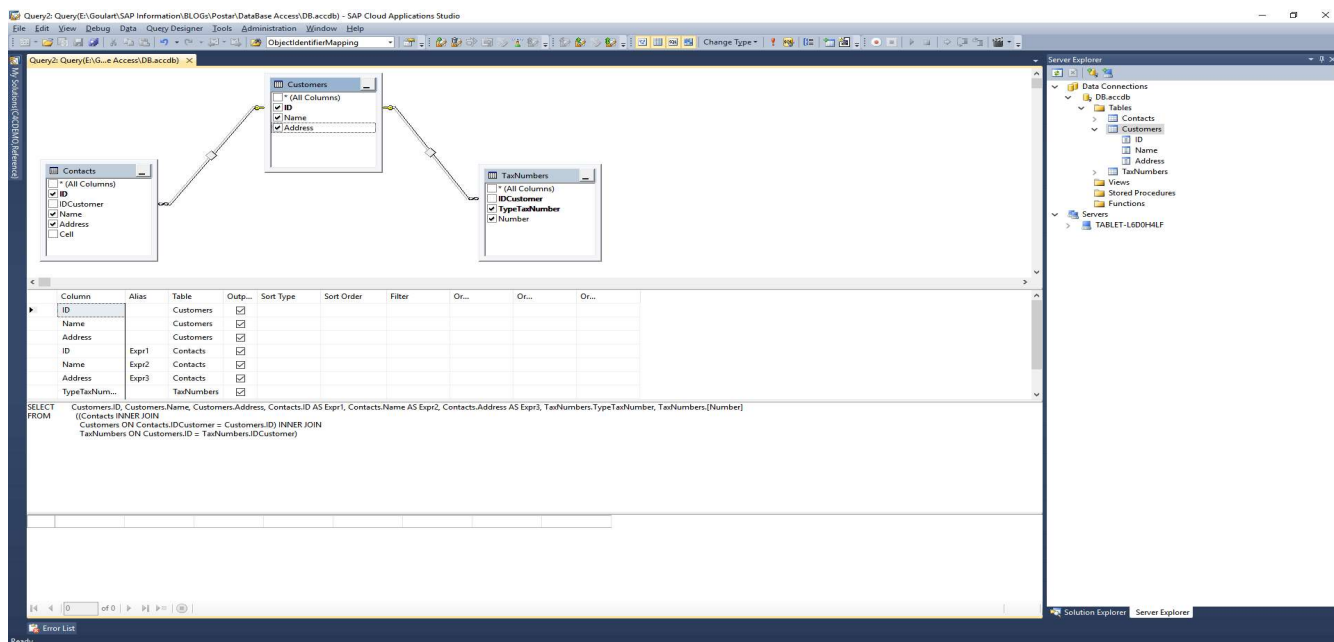


Are exhibit 3 areas on the same order:

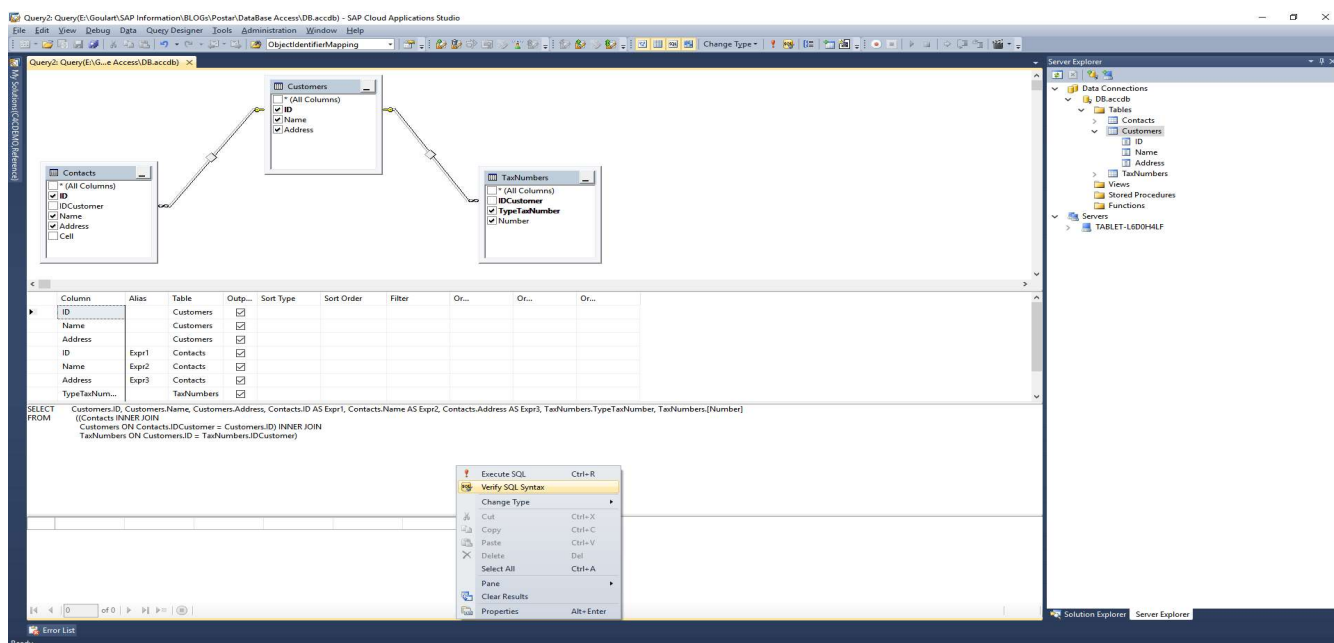
- Diagram
- Criteria
- SQL
- Results



As fields are selected, the SQL pane is changing according of your selections on Diagram. As the same, if you type a select instruction manually.

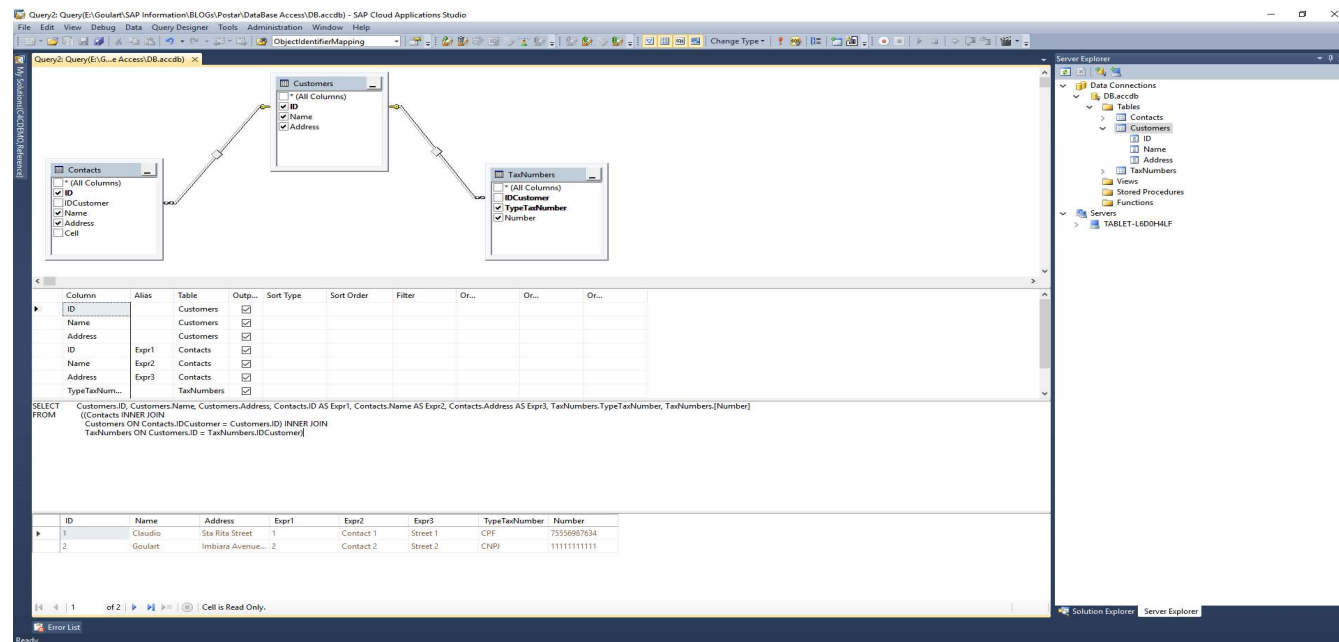


After finish your SQL Instruction, check the syntax, right mouse button and choose “Verify SQL Syntax”

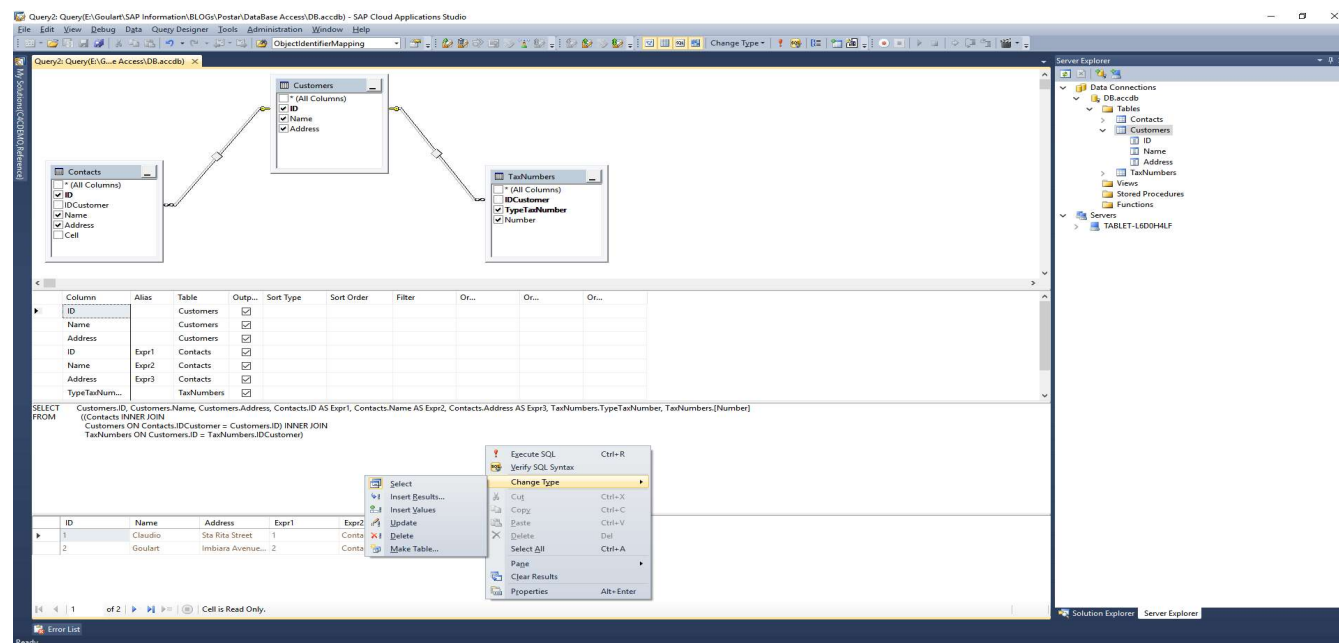


Syntax OK? CTRL+R to execute it. Or mouse right button, and choose “Execute”.

The results are list on Pane Results



Click on mouse right button, and choose change type. You can change your instruction to Insert, Update, Delete and more.



That's it guys!! Simple but efficient!!